

BEISIT®

倍仕得电气科技(杭州)股份有限公司
BEISIT ELECTRIC TECH (HANGZHOU) CO.,LTD.



BBT Fluid Connector
BBT流体快速连接器

倍仕得园区鸟瞰图
Beisit factory Aeroview



做人，把人品做好。
做企业，把产品做好。

董事长： 单以乐

产品合集
Product Collection



品牌解析

Brand Definition

BEISIT[®]

"I" stands for "Integrity 诚信"

"I" stands for "International 国际"

"BEST": Best 最好

做诚信的国际企业，以更好的品质服务客户

Functions as an international company of high integrity whose mission is to provide customer with finest products and services

倍仕得

倍：即多，广聚英才；加倍，业精于勤；倍增，高效发展

pronounced as "bei", means "more", gathering more talents; mastery of work comes from more diligence; developing with high efficiency.

仕：人才，德才兼备；仕途，个人和企业前景光明

pronounced as "shi", means "talents", a person with ability and integrity; Both enterprise and individual should have a bright future, indicating the idea of people-oriented.

得：拥有，拥有更高价值

pronounced as "de", means "possess", to create and possess higher value.

广聚英才，共创美好未来

Gather a large number of talents, and create a glorious future

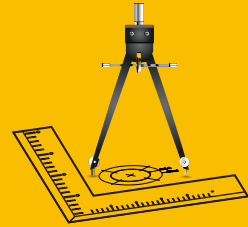
流体连接器净化车间

Quick Fluid Connector Purification Workshop

BEISIT[®]

精密刀具设计制造能力

Design and Manufacture of Precision Cutting Tools.



精密刀具设计制造

Design and Manufacture of Precise Cutting Tools



精密刀具设计制造能力

Design and Manufacture of Precision Cutting Tools

加工精度最高能精确到0.01mm

The machining accuracy can be accurate to 0.01mm

3天提供金属样件

3days to provide metal samples

7天样件交付

7days to deliver samples



企业认证 Company Certifications



信息化系统

Informatization System



高效快捷的信息化系统
Efficient and fast Informatization system.



检测中心 Testing Center



原材料：金属材质检测

The raw materials:metal material testing

密封件：抗老化测试、硬度检测

The sealing:anti-aging test,hardness testing

弹簧：疲劳测试，弹力值检测

The spring:fatigue test,spring force detection



高低温交变湿热试验箱
High and Low Temperature Alternating Humid Heat Test Chamber



流量流阻测试仪
Flow resistance tester



全自动数显弹簧疲劳试验机
Automatic digital display spring fatigue testing machine



机加工零件：粗糙度检测、尺寸测量

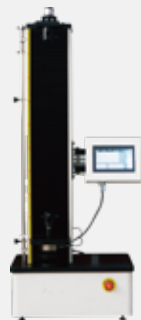
Machined parts:roughness detection,dimensional measurement

表面处理：膜厚检测、盐雾测试

Surface treatment:film thickness detection,salt spray test

产品：耐压测试、密封性测试、流量系数测试、连接力和分开力测试、耐久性测试、
最小爆破压力测试、高温测试、低温测试、互换性测试

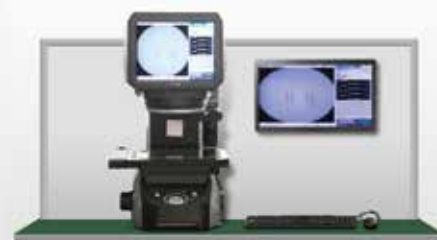
Product:withstand voltage test,sealing test,flow coefficient test,connection and separation
force test,durability test,sinimum burst pressure test,high temperature test,low temperature
test,interchangeability test



全自动数显弹簧拉压力试验机
Automatic digital display spring tension pressure testing machine



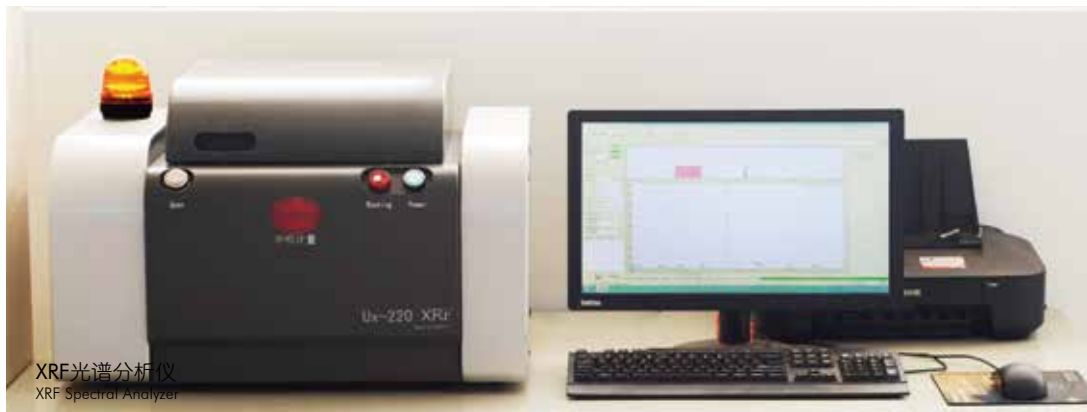
中性盐雾试验箱
Neutral Salt Spray Tester



图像尺寸测量仪
Image dimension measuring instrument



气密性检测仪
Air tightness tester



XRF光谱分析仪
XRF Spectral Analyzer

企业文化

Corporate Culture



倍仕得使命：为全球工业提供最可靠的连接器产品
Mission: To supply most reliable connectors for global industry.

客户价值观：敬畏客户；为客户创造独特价值的决心不动摇
Customer Value: Revere clients; Never waver in determination to create unique value for our clients.

品质价值观：品质如命，只有一次；做出100%合格产品的决心不动摇
Quality Value: Quality as life, only once. Never waver in determination to produce 100% qualified products.

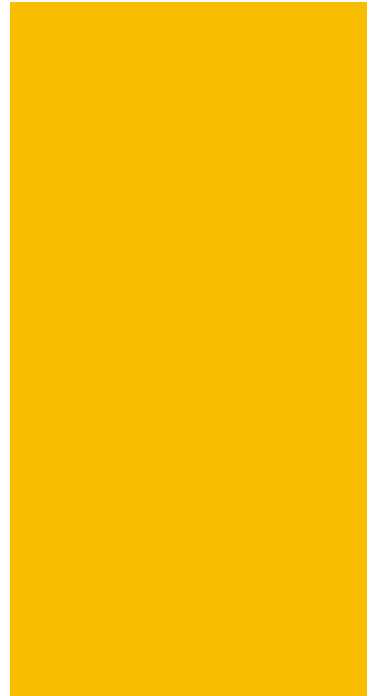
A large, stylized image of the Earth from space, showing the Americas. Overlaid on the globe is a network of glowing blue and white lines and nodes, representing global connectivity and technology.

连接世界 · 连接未来

BBT

流体快速连接器

BBT Fluid Connector



安全环保 Safe & Environmental

- 双向平面密封，连接/断开无滴漏。
- 平面密封设计，既方便清洁，又避免介质受污染。
- 插头、插座均配有保护套，防止在运输中密封面受污染。
- 有断开卸压选型需求，请联系我司。
- Bi-directional flat sealed design that ensures no leakage during connection and disconnection.
- Flat seal design, which is easy to clean and avoids contamination of the medium.
- Plug and Socket are equipped with protective caps to prevent the sealing surface from being polluted during transportation.
- Please contact us if you have requirement for pressure relief after disconnection.

稳定可靠 Stable & Reliable

- 适用极端振动环境，连接更稳定。
- 精选的材质配合独特的表面处理使产品坚固可靠的同时，实现高耐腐蚀性、高耐磨性。
- 有多种密封材质O型圈可选，适应不同介质温度需求，保证密封效果长期稳定可靠。
- 插头插座连接处O型圈的径向设计，保证在连接时，阀门打开前已完成密封。
- More stable connection for extreme vibration environments.
- The selected material combined with unique surface treatment not only makes the product sturdy and reliable, but also achieving high corrosion resistance and wear resistance.
- Various sealing material O-rings are available to meet the temperature requirements of different media and guarantee long-term stable & and reliable sealing performance.
- The radial design of the O-ring at the connection of the Plug and Socket ensures that the sealing function has been completed before the valve is opened during connection.

方便快捷 Convenient

- 推入即可锁紧连接并密封，单手操作简单快捷。
- 多种颜色选择，快速辨别不同回路。
- G外螺纹默认带密封圈，使安装更方便，密封更轻松。
- Push-in to lock the connection and seal, which is easy and convenient to operate by one hand.
- Multiple color options for quick identification of different circuits.
- G external thread with O-ring makes installation more convenient and sealing easier.

个性化定制 Customized

- 可定制接头尾端匹配接口，方便安装。
- 定制软管集成，美观，降低泄漏风险。
- 其他定制要求请咨询我司。
- Providing customized end-fitting for easy installation.
- Providing customized hose integration with aesthetic appearance and reducing risk of leakage.
- For other customization requirements, please contact us freely.

BBT

流体快速连接器

BBT Fluid Connector



应用领域 Application Fields

- 军工防务、航空航天等领域 Military defense, Aerospace and other fields
- 数据中心、超级计算机 Data center, Supercomputer
- 轨道交通、新能源汽车 Rail transit, New energy vehicles
- 工业 Industry

适用介质 Fluids

- 冷却液 Coolant
- 水-乙二醇 Glycol Water
- 导热油 Heat transfer oils
- 酯类 Esters
- 煤油 kerosene
-

基础型号

补充选项, 后缀信息

BBT 03S G18F - SS - NB - 90 - RD

颜色 Colour

RD 红色	GN 绿色
YW 黄色	BK 黑色
BU 蓝色	

角度 Angle

00 直通 (默认, 型号不体现)
90 90度弯头
45 135度弯头

密封圈 Sealing

EP 乙烯橡胶EPDM (默认, 型号不体现)	FF 高氟橡胶FFKM
NB 丁腈橡胶NBR	CR 氯丁橡胶CR
FM 氟碳橡胶FPM/FKM/Viton	
FV 氟硅橡胶FVMQ	

材料 Material

AL 铝合金 (默认, 型号不体现)
SS 不锈钢316L
BR 铜
SA 不锈钢304

内外螺纹 Internal and external threads

F 内螺纹
M 外螺纹

G/R/N/J螺纹尺寸 Size

18 1/8	32 1-1/2吋
14 1/4	01 1吋
38 3/8	02 2吋
12 1/2	04 4吋
34 3/4	

M螺纹尺寸 Size

08 M8螺纹
12 M12螺纹
21 M21螺纹

H08 接08内径的橡胶软管
S10 接10mm外径的不锈钢管
B810 接8x10的铜管
T812 接8x12的塑料管
F3636 法兰孔36x36

连接方式 Connection method

G G螺纹	H 软管Hose
R R螺纹	S 不锈钢管 SS
N NPT螺纹	B 铜管 Brass
J UNF螺纹JIC37°锥 ISO8434	T 扣压塑料管TUBE
M M螺纹	F 法兰Flange

插头插座 Plug socket

S 插座
P 插头

等效通径 Equivalent diameter

03 口径3mm	09 口径9mm	20 口径20mm
05 口径5mm	10 口径10mm	25 口径25mm
06 口径6mm	12 口径12mm	50 口径50mm
08 口径8mm	16 口径16mm	00 口径100mm

类目名称 Category name

B 自动连接平面密封	BBT 卡口
S 不含锁紧系统	BTG 三曲槽
T 其他	BSL 钢珠自锁
	SCB 盲插
	SDB 位移盲插
	TPP 推拉平面密封
	TSF 螺纹锁紧连接
	TPB 按钮金属接头

材质 Material	编码 Code	工作温度 Working temperature	应用 Application
丁腈橡胶 NBR	NB	-15 ~ + 100°C	1、一般应用 2、良好的机械强度 1. General applications. 2. High mechanical strength.
氟碳橡胶 FPM、FKM、Viton	FM	-10 ~ + 200°C	1、良好的耐化学性 2、优异的耐高温性能，可用于最高200°C的应用 3、适用于矿物油、合成液压油、燃料、化工产品、碳氢化合物和导热流体回路 1. Good chemical resistance. 2. Outstanding resistance to hightemperatures up to 200°C. 3. Resistance to mineral oils, synthetichydraulic oils, fuels, chemicals.hydrocarbons and coolants.
乙丙橡胶 EPDM	EP	-20 ~ + 150°C	1、优异的耐高温性 2、适用于磷酸盐酯型制动液，冷、热水，蒸汽 3、注意介质回路各部件不能使用含矿物油的情况 1. Excellent resistance to high temperatures. 2. Compatible with phosphate-based brakefluids - esters, hot and cold water, steam. 3. Pay attention to the use of mineral oil in the components of the medium circuit
高氟橡胶 FFKM	FF	0 ~ + 250°C	1、兼具弹性体和聚四氟乙烯耐化学腐蚀性的特点 2、具有很好的耐热性和耐多数化学剂 3、适用于导热流体 1. Combines the qualities of an elastomerwith the chemical resistance of PTFE. 2. Remarkable resistance to heat and mostchemical agents including inorganic andorganic acids. 3. Coolants.
氟硅橡胶 FVMQ	FV	-45 ~ + 175°C	1、最大工作压力：50 bar 2、良好的耐低温和耐高温性能 3、适用于矿物油、燃料 1. Max. working pressure: 50 bar. 2. Good resistance to low and hightemperatures. 3. Resistance to mineral oils, fuels.
聚四氟乙烯 PTFE	PT	-50 ~ + 200°C	1、最大工作压力：80 bar 2、良好的耐化学性 3、优异的耐低温和耐高温性能 4、比弹性体的性能更优异 1. Max. working pressure: 80 bar. 2. Excellent chemical resistance. 3. Very good resistance to low and hightemperatures. 4. Superior performance to elastomers.
氯丁橡胶 CR	CR	-40 ~ + 100°C	耐老化，特别适用于制冷液 Good resistance to ageing andrefrigerants.

为了选择最能满足您应用需求的解决方案，建议向我们提供如下准确信息：

In order to choose the solution that best meets your application needs, it is recommended to provide us with the following accurate information:

- 1、流体类型 2、工作压力 3、工作温度 4、水溶液的盐和酸浓度 5、特别的使用条件
 1. Fluid type 2. Work pressure 3. Working temperature 4. Salt and acid concentration of aqueous solution 5. Special usage conditions

若需咨询，请随时联系我们的技术专家。

我们经验丰富的快速连接器专家，为您提供最贴心的服务。

If you need any inquiries, please feel free to contact our technical experts.

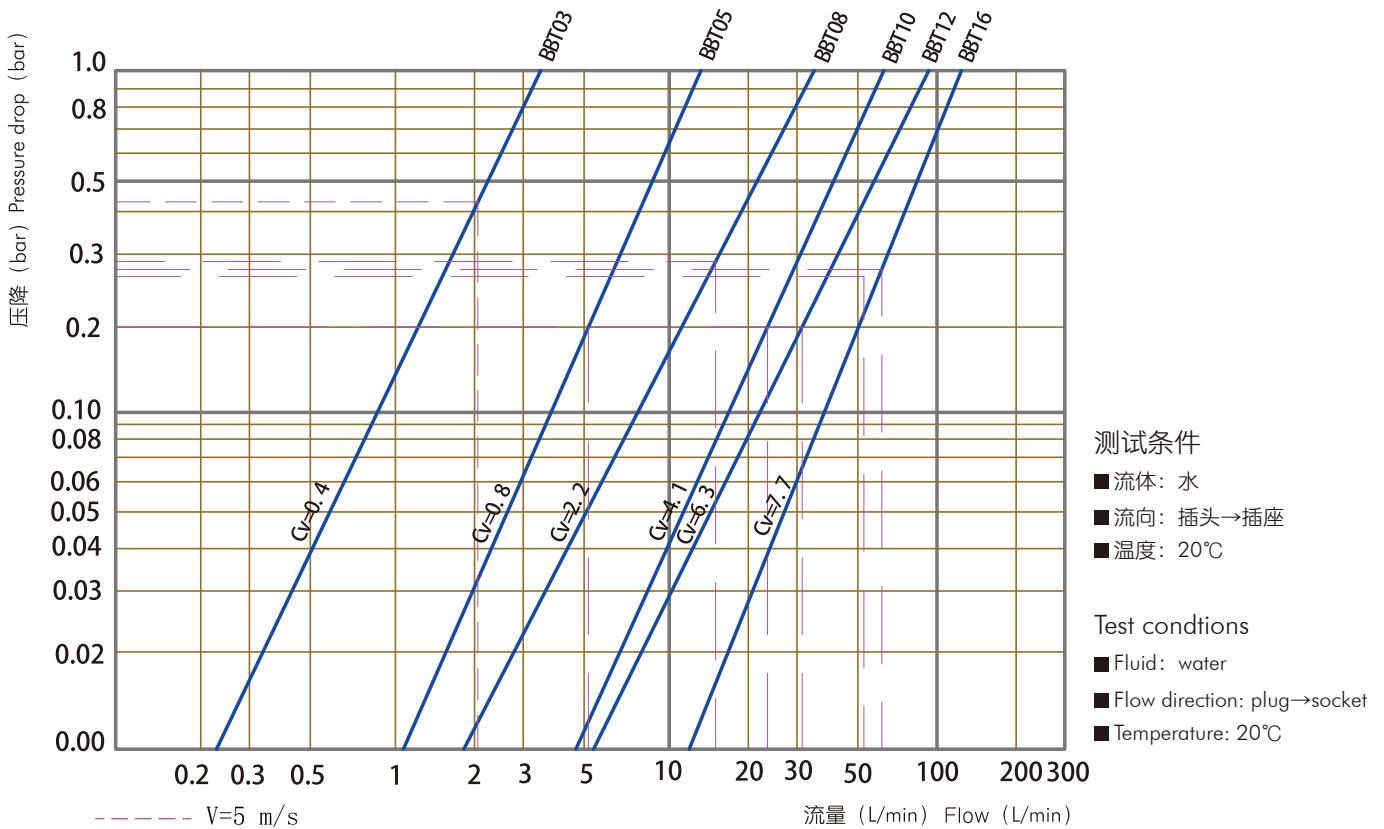
Our experienced quick connector experts provide you with the most thoughtful service.



普通型 Regular Type

产品型号 Product Model	BBT03	BBT05	BBT08	BBT10	BBT12	BBT16
额定工作压力 (bar) Working Pressure (bar)	20	20	20	20	20	20
Cv值 (Gal/min) Cv (Gal/min)	0.4	0.8	2.2	4.1	6.3	7.7
额定工作流量 (L/Min) Working Flow (L/Min)	2.1	5.88	15	23.55	33.9	60.3
单次插拔最大泄露量 (ml) Leakage Per Disconnection (ml)	0.002	0.02	0.03	0.05	0.05	0.09

BBT流量曲线
BBT Flow Chart



→ BBT03

插头插座连接图
Plug and socket connection diagram

$L = L1 + L2 - X$
 $X = 16.5\text{mm}$



	Picture	End Fitting Type	L1	L2	L3	L4	D1	D2	Hex	Product model
插头		JIC37°锥 UNF3/8-24	46.5	/	13	/	16	/	13.5	BBT 03P J38
		JIC37°锥 UNF3/8-24 90°弯头	44	/	13	/	16	/	13.5	BBT 03P J38-90
插座		JIC37°锥 UNF3/8-24	/	44.5	/	13	/	16	15.5	BBT 03S J38
		法兰螺纹 孔位16.6x16.6	/	34.5	/	/	/	16	25	BBT 03S F1616

若需咨询其他尾端连接方式，请随时联系我们的技术专家。
我们经验丰富的快速连接器专家，为您提供最贴心的服务。
If you need to inquire about other end fitting, please feel free to contact our technical experts.
Our experienced quick connector experts provide you with the most thoughtful service.

→ BBT05

插头插座连接图
Plug and socket connection diagram

$L = L1 + L2 - X$
 $X = 18.6\text{mm}$



	Picture	End Fitting Type	L1	L2	L3	L4	D1	D2	Hex	Product model
插头		G1/4外螺纹	47	/	11	/	21	/	19	BBT 05P G14M
		接内径 9.5mm软管	66.5	/	21.5	/	21	/	19	BBT 05P H10
插座		JIC37° 锥UNF9/16-18	/	48.5	/	14	/	22	20	BBT 05S J916
		法兰螺纹 孔位18x18	/	43	/	/	/	20	28	BBT 05S F1818

若需咨询其他尾端连接方式，请随时联系我们的技术专家。
我们经验丰富的快速连接器专家，为您提供最贴心的服务。
If you need to inquire about other end fitting, please feel free to contact our technical experts.
Our experienced quick connector experts provide you with the most thoughtful service.

→ BBT08

插头插座连接图
Plug and socket connection diagram

$L = L1 + L2 - X$
 $X = 22.5\text{mm}$



	Picture	End Fitting Type	L1	L2	L3	L4	D1	D2	Hex	Product model
插头		G3/8外螺纹	55.5	/	12	/	29.5	/	26	BBT 08P G38M
		G3/8内螺纹	59.5	/	13	/	29.5	/	26	BBT 08P G38F
插座		G3/8内螺纹	/	50	/	13	/	27	24	BBT 08S G38F
		法兰螺纹 孔位22x22	/	41	/	/	/	25	30	BBT 08S F2222

若需咨询其他尾端连接方式，请随时联系我们的技术专家。
我们经验丰富的快速连接器专家，为您提供最贴心的服务。
If you need to inquire about other end fitting, please feel free to contact our technical experts.
Our experienced quick connector experts provide you with the most thoughtful service.

→ BBT10

插头插座连接图
Plug and socket connection diagram

$L = L1 + L2 - X$
 $X = 30.5\text{mm}$



	Picture	End Fitting Type	L1	L2	L3	L4	D1	D2	Hex	Product model
插头		G1/2外螺纹	65	/	14	/	34.5	/	30	BBT 10P G12M
		G1/2内螺纹	70	/	15	/	34.5	/	30	BBT 10P G12F
插座		G1/2外螺纹	/	47.5	/	14	/	34.5	30	BBT 10S G12M
		G1/2内螺纹	/	52.5	/	15	/	34.5	30	BBT 10S G12F

若需咨询其他尾端连接方式，请随时联系我们的技术专家。
我们经验丰富的快速连接器专家，为您提供最贴心的服务。
If you need to inquire about other end fitting, please feel free to contact our technical experts.
Our experienced quick connector experts provide you with the most thoughtful service.

→ BBT12

插头插座连接图
Plug and socket connection diagram

$L = L1 + L2 - X$
 $X = 32.1\text{mm}$



	Picture	End Fitting Type	L1	L2	L3	L4	D1	D2	Hex	Product model
插头		G1/2外螺纹	80	/	14	/	40	/	35	BBT 12P G12M
		接内径 19mm软管	92	/	32	/	40	/	35	BBT 12P H19
插座		G1/2外螺纹	/	69	/	14	/	40	36	BBT 12S G12M
		法兰螺纹 孔位34x34	/	55	/	/	/	40	45	BBT 12S F3434

若需咨询其他尾端连接方式，请随时联系我们的技术专家。
我们经验丰富的快速连接器专家，为您提供最贴心的服务。
If you need to inquire about other end fitting, please feel free to contact our technical experts.
Our experienced quick connector experts provide you with the most thoughtful service.

→ BBT16

插头插座连接图
Plug and socket connection diagram

$L = L1 + L2 - X$
 $X = 41.4\text{mm}$



	Picture	End Fitting Type	L1	L2	L3	L4	D1	D2	Hex	Product model
插头		G3/4外螺纹	106	/	16	/	48.5	/	40	BBT 16P G34M
		M27内螺纹	105	/	20	/	48.5	/	40	BBT 16P M27F
插座		G3/4外螺纹	/	89	/	16	/	48	40	BBT 16S G34M
		M27外螺纹	/	89	/	16	/	48	40	BBT 16S M27M

若需咨询其他尾端连接方式，请随时联系我们的技术专家。
我们经验丰富的快速连接器专家，为您提供最贴心的服务。
If you need to inquire about other end fitting, please feel free to contact our technical experts.
Our experienced quick connector experts provide you with the most thoughtful service.

倍仕得电气科技(杭州)股份有限公司
BEISIT ELECTRIC TECH (HANGZHOU) CO.,LTD.

浙江省杭州市临平经济开发区唐梅路1号 邮编: 311100

Add.: 1, Tangmei Rd., Linping Economic Development Area, Hangzhou, Zhejiang 311100, China

Tel: 0086-571-8936 2888 E-mail: info@beisit.com

Http: // www.beisit.com

倍仕得电气科技(深圳)有限公司
BEISIT ELECTRIC TECH (SHENZHEN) CO.,LTD.

深圳龙华区壹成环智中心B座1203-1204单元 邮编: 518109

Add.: Unit 1203-1204, Building B, Yicheng Huanzhi Center, Longhua District, Shenzhen 518109 China

Tel: 0086-755-23730413 E-mail: info@beisit.com

Http: // www.beisit.com

倍仕得电气科技(杭州)股份有限公司天津分公司
BEISIT ELECTRIC TECH (HANGZHOU) CO.,LTD. - TIANJIN BRANCH

天津河东津滨大道万达广场写字楼A座1416 邮编: 300171

Add.: #1416 Building A, Wanda Plaza Office Building, Jinbin Avenue, Hedong District, Tianjin 300171 China

Tel: 0086-22-85453260 E-mail: info@beisit.com

Http: // www.beisit.com



微信公众号



官网



抖音

⚠ We reserve the right to make technical changes or modify the contents of this document without prior notice. All the agreed particulars shall prevail. All rights reserved.

BEISIT®

倍仕得电气科技(杭州)股份有限公司
BEISIT ELECTRIC TECH (HANGZHOU) CO.,LTD.



BSL Fluid Connector
BSL流体快速连接器

倍仕得园区鸟瞰图
Beisit factory Aeroview



做人, 把人品做好,
做企业, 把产品做好。

董事长: 单以乐

产品合集
Product Collection



品牌解析

Brand Definition

BEISIT[®]

"I" stands for "Integrity 诚信"

"I" stands for "International 国际"

"BEST": Best 最好

做诚信的国际企业，以更好的品质服务客户

Functions as an international company of high integrity whose mission is to provide customer with finest products and services

倍仕得

倍：即多，广聚英才；加倍，业精于勤；倍增，高效发展

pronounced as "bei", means "more", gathering more talents; mastery of work comes from more diligence; developing with high efficiency.

仕：人才，德才兼备；仕途，个人和企业前景光明

pronounced as "shi", means "talents", a person with ability and integrity; Both enterprise and individual should have a bright future, indicating the idea of people-oriented.

得：拥有，拥有更高价值

pronounced as "de", means "possess", to create and possess higher value.

广聚英才，共创美好未来

Gather a large number of talents, and create a glorious future

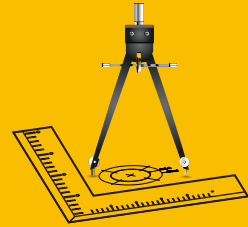
流体连接器净化车间

Quick Fluid Connector Purification Workshop

BEISIT[®]

精密刀具设计制造能力

Design and Manufacture of Precision Cutting Tools.



精密刀具设计制造

Design and Manufacture of Precise Cutting Tools



精密刀具设计制造能力

Design and Manufacture of Precision Cutting Tools

加工精度最高能精确到0.01mm

The machining accuracy can be accurate to 0.01mm

3天提供金属样件

3days to provide metal samples

7天样件交付

7days to deliver samples



企业认证 Company Certifications



信息化系统

Informatization System

BEISIT[®]

高效快捷的信息化系统
Efficient and fast Informatization system.



检测中心 Testing Center



原材料：金属材质检测
The raw materials:metal material testing
密封件：抗老化测试、硬度检测
The sealing:anti-aging test,hardness testing
弹簧：疲劳测试，弹力值检测
The spring:fatigue test,spring force detection



高低温交变湿热试验箱
High and Low Temperature Alternating Humid Heat Test Chamber



流量流阻测试仪
Flow resistance tester



全自动数显弹簧疲劳试验机
Automatic digital display spring fatigue testing machine



机加工零件：粗糙度检测、尺寸测量

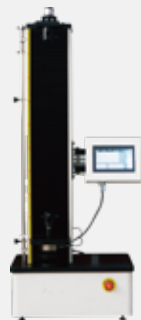
Machined parts:roughness detection,dimensional measurement

表面处理：膜厚检测、盐雾测试

Surface treatment:film thickness detection,salt spray test

产品：耐压测试、密封性测试、流量系数测试、连接力和分开力测试、耐久性测试、
最小爆破压力测试、高温测试、低温测试、互换性测试

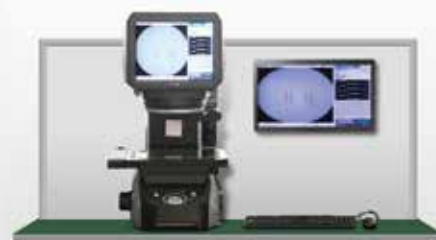
Product:withstand voltage test,sealing test,flow coefficient test,connection and separation
force test,durability test,sinimum burst pressure test,high temperature test,low temperature
test,interchangeability test



全自动数显弹簧拉压力试验机
Automatic digital display spring tension pressure testing machine



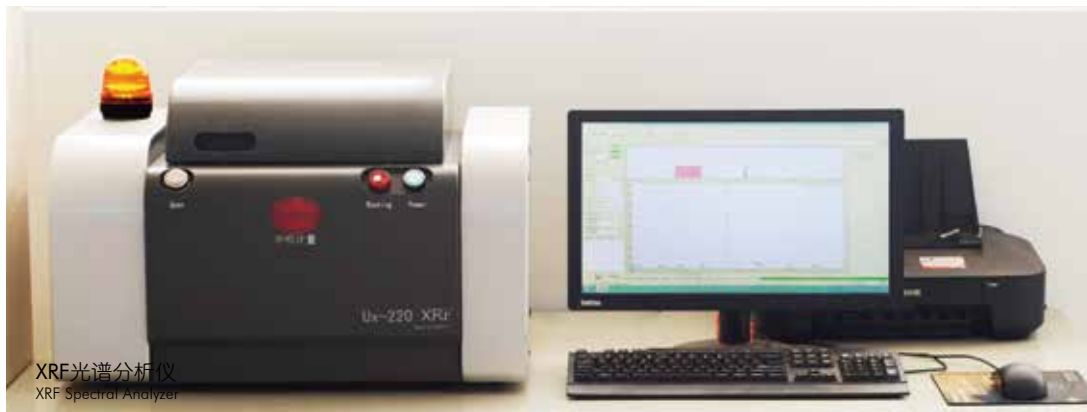
中性盐雾试验箱
Neutral Salt Spray Tester



图像尺寸测量仪
Image dimension measuring instrument



气密性检测仪
Air tightness tester



XRF光谱分析仪
XRF Spectral Analyzer

企业文化

Corporate Culture



倍仕得使命：为全球工业提供最可靠的连接器产品
Mission: To supply most reliable connectors for global industry.

客户价值观：敬畏客户；为客户创造独特价值的决心不动摇
Customer Value: Revere clients; Never waver in determination to create unique value for our clients.

品质价值观：品质如命，只有一次；做出100%合格产品的决心不动摇
Quality Value: Quality as life, only once. Never waver in determination to produce 100% qualified products.

A large, stylized image of the Earth from space, showing the Americas. The globe is overlaid with a network of glowing blue and white lines, representing global connectivity and technology. The lines form a complex web of connections across the planet.

连接世界 · 连接未来

BSL

流体快速连接器

BSL TYPE Fluid Connector



安全环保 Safe & Environmental

- 双向平面密封，连接/断开无滴漏。
- 平面密封设计，既方便清洁，又避免介质受污染。
- 插头、插座均配有保护套，防止在运输中密封面受污染。
- 有断开卸压选型需求，请联系我司。
- Bi-directional flat sealed design that ensures no leakage during connection and disconnection.
- Flat seal design, which is easy to clean and avoids contamination of the medium.
- Plug and Socket are equipped with protective caps to prevent the sealing surface from being polluted during transportation.
- Please contact us if you have requirement for pressure relief after disconnection.

稳定可靠 Stable & Reliable

- 钢珠锁紧&内部长导向结构，适用更大的机械应力环境。
- 有多种密封材质O型圈可选，适应不同介质温度需求，保证密封效果长期稳定可靠。
- 插头插座连接处O型圈的径向设计，保证在连接时，阀门打开前已完成密封。
- Steel ball locking and internal long guiding structure is suitable for greater mechanical stress environment.
- Various sealing material O-rings are available to meet the temperature requirements of different media and guarantee long-term stable & and reliable sealing performance.
- The radial design of the O-ring at the connection of the Plug and Socket ensures that the sealing function has been completed before the valve is opened during connection.

方便快捷 Convenient

- 钢珠锁紧自动连接，推入即可锁紧连接并密封，视线外亦可单手操作，简单轻松，方便快捷。
- 多种颜色选择，快速辨别不同回路。
- G外螺纹默认带密封圈，使安装更方便，密封更轻松。
- 凸肩和滚花的长锁紧环更容易抓握和断开。
- Steel ball locking automatic connection, push-in to lock the connection and seal, also can be operated with one hand out of sight, simple and easy, convenient and quick.
- Multiple color options for quick identification of different circuits.
- G external thread with O-ring makes installation more convenient and sealing easier.
- Long locking rings with convex shoulder and knurls for easier gripping and disconnecting.

个性化定制 Customized

- 可定制接头尾端匹配接口，方便安装。
- 定制软管集成，美观，降低泄漏风险。
- 其他定制要求请咨询我司。
- Providing customized end-fitting for easy installation.
- Providing customized hose integration with aesthetic appearance and reducing risk of leakage.
- For other customization requirements, please contact us freely.

BSL

流体快速连接器

BSL Fluid Connector



应用领域 Application Fields

- 军工防务、航空航天等领域 Military defense , Aerospace and other fields
- 医疗设备 Medical equipment
- 数据中心、超级计算机 Data center, Supercomputer
- 核能、风电、光伏（储能、变流器）等新能源领域
Nuclear energy, wind power, photovoltaic (energy storage, converters) and other new energy fields
- 轨道交通、新能源汽车 Rail transit, New energy vehicles
- 工业 Industry

流体 Fluids

- 冷却液 Coolant
- 去离子水 Deionized water
- 水-乙二醇 Glycol Water
- 导热油 Heat transfer oils
- 酯类 Esters
- 煤油 kerosene
- PAO
-

基础型号

补充选项, 后缀信息

BSL 06S G14F - SS - NB - 90 - RD

颜色 Colour

RD 红色	GN 绿色
YW 黄色	BK 黑色
BU 蓝色	

角度 Angle

00 直通 (默认, 型号不体现)
90 90度弯头
45 135度弯头

密封圈 Sealing

EP 乙丙烯橡胶EPDM (默认, 型号不体现)	FF 高氟橡胶FFKM
NB 丁晴橡胶NBR	CR 氯丁橡胶CR
FM 氟碳橡胶FPM/FKM/Viton	
FV 氟硅橡胶FVMQ	

材料 Material

不锈钢304+铜镀镍 (默认, 型号不体现)
SA 不锈钢304
SS 不锈钢316L

内外螺纹 Internal and external threads

F 内螺纹
M 外螺纹

G/R/N/J螺纹尺寸 Size

18 1/8	32 1-1/2吋
14 1/4	01 1吋
38 3/8	02 2吋
12 1/2	04 4吋
34 3/4	

M螺纹尺寸 Size

08 M8螺纹
12 M12螺纹
21 M21螺纹

H08 接08内径的橡胶软管
S10 接10mm外径的不锈钢管
B810 接8x10的铜管
T812 接8x12的塑料管
F3636 法兰孔36x36

连接方式 Connection method

G G螺纹	H 软管Hose
R R螺纹	S 不锈钢管 SS
N NPT螺纹	B 铜管 Brass
J UNF螺纹JIC37°锥 ISO8434	T 扣压塑料管TUBE
M M螺纹	F 法兰Flange

插头插座 Plug socket

S 插座
P 插头

等效通径 Equivalent diameter

03 □径3mm	09 □径9mm	20 □径20mm
05 □径5mm	10 □径10mm	25 □径25mm
06 □径6mm	12 □径12mm	50 □径50mm
08 □径8mm	16 □径16mm	00 □径100mm

类目名称 Category name

B 自动连接平面密封	BBT 卡口
S 不含锁紧系统	BTG 三曲槽
T 其他	BSL 钢珠自锁
	SCB 盲插
	SDB 位移盲插
	TPP 推拉平面密封
	TSF 螺纹锁紧连接
	TPB 按钮金属接头

材质 Material	编码 Code	工作温度 Working temperature	应用 Application
丁腈橡胶 NBR	NB	-15 ~ + 100°C	1、一般应用 2、良好的机械强度 1. General applications. 2. High mechanical strength.
氟碳橡胶 FPM、FKM、Viton	FM	-10 ~ + 200°C	1、良好的耐化学性 2、优异的耐高温性能，可用于最高200°C的应用 3、适用于矿物油、合成液压油、燃料、化工产品、碳氢化合物和导热流体回路 1. Good chemical resistance. 2. Outstanding resistance to hightemperatures up to 200°C. 3. Resistance to mineral oils, synthetichydraulic oils, fuels, chemicals.hydrocarbons and coolants.
乙丙橡胶 EPDM	EP	-20 ~ + 150°C	1、优异的耐高温性 2、适用于磷酸盐酯型制动液，冷、热水，蒸汽 3、注意介质回路各部件不能使用含矿物油的情况 1. Excellent resistance to high temperatures. 2. Compatible with phosphate-based brakefluids - esters, hot and cold water, steam. 3. Pay attention to the use of mineral oil in the components of the medium circuit
高氟橡胶 FFKM	FF	0 ~ + 250°C	1、兼具弹性体和聚四氟乙烯耐化学腐蚀性的特点 2、具有很好的耐热性和耐多数化学剂 3、适用于导热流体 1. Combines the qualities of an elastomerwith the chemical resistance of PTFE. 2. Remarkable resistance to heat and mostchemical agents including inorganic andorganic acids. 3. Coolants.
氟硅橡胶 FVMQ	FV	-45 ~ + 175°C	1、最大工作压力：50 bar 2、良好的耐低温和耐高温性能 3、适用于矿物油、燃料 1. Max. working pressure: 50 bar. 2. Good resistance to low and hightemperatures. 3. Resistance to mineral oils, fuels.
聚四氟乙烯 PTFE	PT	-50 ~ + 200°C	1、最大工作压力：80 bar 2、良好的耐化学性 3、优异的耐低温和耐高温性能 4、比弹性体的性能更优异 1. Max. working pressure: 80 bar. 2. Excellent chemical resistance. 3. Very good resistance to low and hightemperatures. 4. Superior performance to elastomers.
氯丁橡胶 CR	CR	-40 ~ + 100°C	耐老化，特别适用于制冷液 Good resistance to ageing andrefrigerants.

为了选择最能满足您应用需求的解决方案，建议向我们提供如下准确信息：

In order to choose the solution that best meets your application needs, it is recommended to provide us with the following accurate information:

- 1、流体类型 2、工作压力 3、工作温度 4、水溶液的盐和酸浓度 5、特别的使用条件
 1. Fluid type 2. Work pressure 3. Working temperature 4. Salt and acid concentration of aqueous solution 5. Special usage conditions

若需咨询，请随时联系我们的技术专家。

我们经验丰富的快速连接器专家，为您提供最贴心的服务。

If you need any inquiries, please feel free to contact our technical experts.

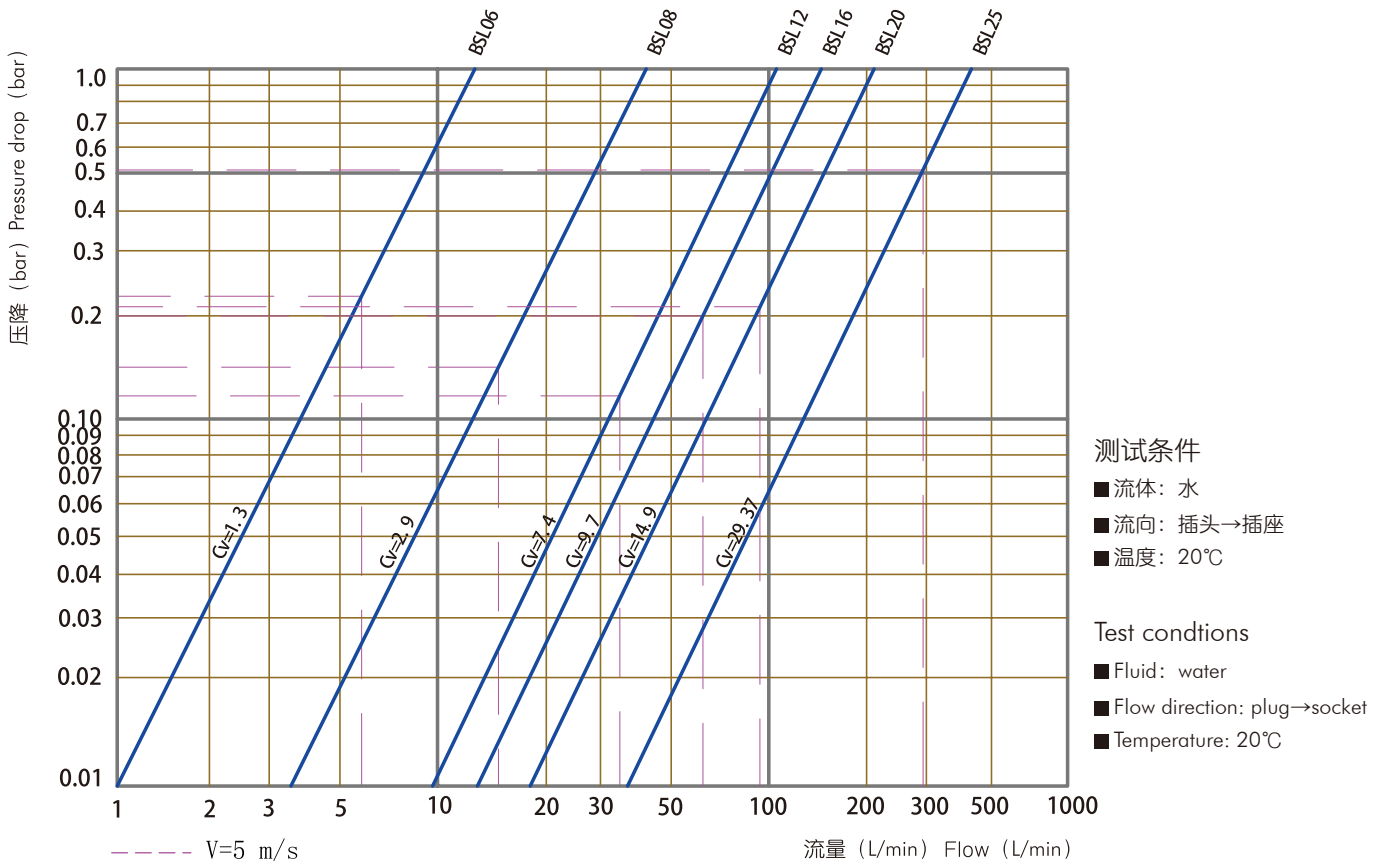
Our experienced quick connector experts provide you with the most thoughtful service.



普通型 Regular Type

产品型号 Product Model	BSL06	BSL08	BSL12	BSL16	BSL20	BSL25
额定工作压力 (bar) Working Pressure (bar)	16	16	16	16	16	16
Cv值 (Gal/min) Cv (Gal/min)	1.3	2.9	7.4	9.7	14.9	29.37
额定工作流量 (L/Min) Working Flow (L/Min)	8.5	15.07	33.90	68.05	94.2	147.18
单次插拔最大泄露量 (ml) Leakage Per Disconnection (ml)	0.02	0.02	0.05	0.10	0.12	0.15

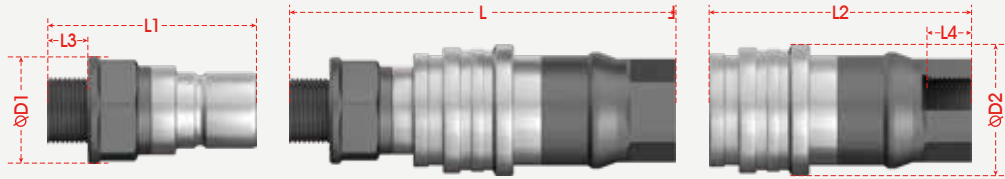
BSL流量曲线
BSL Flow Chart



→ BSL06

插头插座连接图
Plug and socket connection diagram

$L = L1 + L2 - X$
 $X = 24.6\text{mm}$



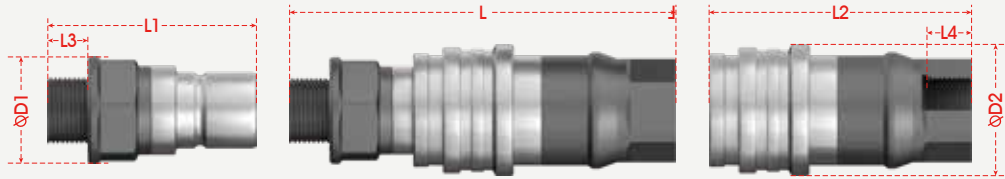
	Picture	End Fitting Type	L1	L2	L3	L4	D1	D2	Hex	Product model
插头		G1/4外螺纹	55	/	11	/	19	/	17	BSL 06P G14M
		G1/4内螺纹	59	/	12	/	19	/	17	BSL 06P G14F
插座		G1/4外螺纹	/	63	/	11	/	24	19	BSL 06S G14M
		G1/4内螺纹	/	60.5	/	12	/	24	19	BSL 06S G14F

若需咨询其他尾端连接方式，请随时联系我们的技术专家。
我们经验丰富的快速连接器专家，为您提供最贴心的服务。
If you need to inquire about other end fitting, please feel free to contact our technical experts.
Our experienced quick connector experts provide you with the most thoughtful service.

→ BSL08

插头插座连接图
Plug and socket connection diagram

$L = L1 + L2 - X$
 $X = 25.2\text{mm}$



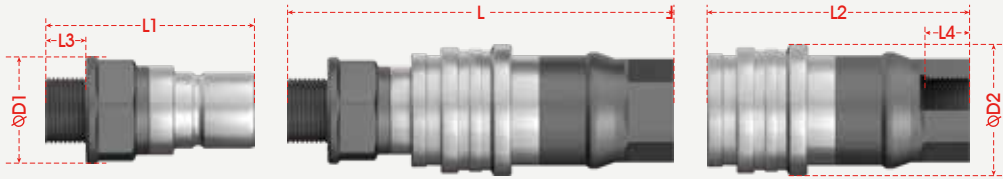
	Picture	End Fitting Type	L1	L2	L3	L4	D1	D2	Hex	Product model
插头		G3/8外螺纹	53.5	/	12	/	23.5	/	21	BSL 08P G38M
		G3/8内螺纹	57.5	/	13	/	26.5	/	24	BSL 08P G38F
插座		G3/8外螺纹	/	55	/	12	/	26.5	24	BSL 08S G38M
		G3/8内螺纹	/	59	/	13	/	26.5	24	BSL 08S G38F

若需咨询其他尾端连接方式，请随时联系我们的技术专家。
我们经验丰富的快速连接器专家，为您提供最贴心的服务。
If you need to inquire about other end fitting, please feel free to contact our technical experts.
Our experienced quick connector experts provide you with the most thoughtful service.

→ BSL12

插头插座连接图
Plug and socket connection diagram

$L = L1 + L2 - X$
 $X = 27\text{mm}$



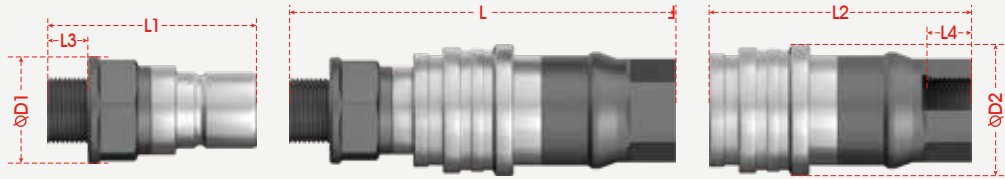
	Picture	End Fitting Type	L1	L2	L3	L4	D1	D2	Hex	Product model
插头		G1/2外螺纹	68	/	14	/	34	/	30	BSL 12P G12M
		G1/2内螺纹	73	/	15	/	34	/	30	BSL 12P G12F
插座		G1/2外螺纹	/	84	/	14	/	42	30	BSL 12S G12M
		G1/2内螺纹	/	89	/	15	/	42	30	BSL 12S G12F

若需咨询其他尾端连接方式，请随时联系我们的技术专家。
我们经验丰富的快速连接器专家，为您提供最贴心的服务。
If you need to inquire about other end fitting, please feel free to contact our technical experts.
Our experienced quick connector experts provide you with the most thoughtful service.

→ BSL16

插头插座连接图
Plug and socket connection diagram

$L = L1 + L2 - X$
 $X = 56.8\text{mm}$



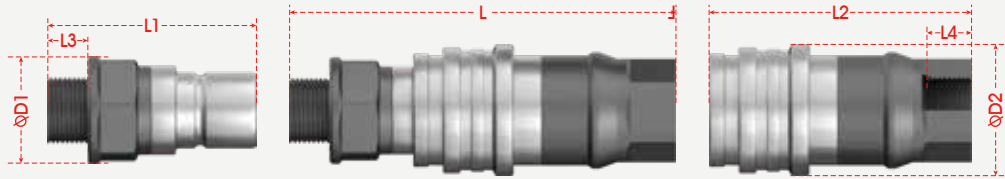
	Picture	End Fitting Type	L1	L2	L3	L4	D1	D2	Hex	Product model
插头		G3/4外螺纹	100	/	16	/	41.5	/	38	BSL 16P G34M
		G3/4内螺纹	105	/	17	/	41.5	/	38	BSL 16P G34F
插座		G3/4外螺纹	/	125	/	16	/	53	38	BSL 16S G34M
		G3/4内螺纹	/	130	/	17	/	53	36	BSL 16S G34F

若需咨询其他尾端连接方式，请随时联系我们的技术专家。
我们经验丰富的快速连接器专家，为您提供最贴心的服务。
If you need to inquire about other end fitting, please feel free to contact our technical experts.
Our experienced quick connector experts provide you with the most thoughtful service.

→ BSL20

插头插座连接图
Plug and socket connection diagram

$L = L1 + L2 - X$
 $X = 60\text{mm}$



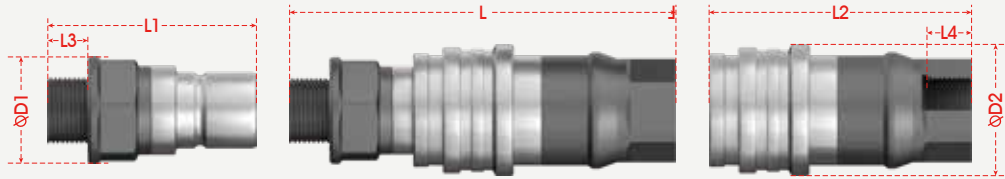
	Picture	End Fitting Type	L1	L2	L3	L4	D1	D2	Hex	Product model
插头		G1外螺纹	113	/	20	/	/	/	55	BSL 20P G01M
		G1内螺纹	114	/	21	/	/	/	55	BSL 20P G01F
插座		G1外螺纹	/	139	/	20	/	60	55	BSL 20S G01M
		G1内螺纹	/	139	/	21	/	60	55	BSL 20S G01F

若需咨询其他尾端连接方式，请随时联系我们的技术专家。
我们经验丰富的快速连接器专家，为您提供最贴心的服务。
If you need to inquire about other end fitting, please feel free to contact our technical experts.
Our experienced quick connector experts provide you with the most thoughtful service.

→ BSL25

插头插座连接图
Plug and socket connection diagram

$L=L1+L2-X$
 $X=67.5\text{mm}$



	Picture	End Fitting Type	L1	L2	L3	L4	D1	D2	Hex	Product model
插头		G1外螺纹	122	/	20	/	/	/	55	BSL 25P G01M
		G1内螺纹	123	/	21	/	/	/	55	BSL 25P G01F
插座		G1外螺纹	/	148	/	20	/	67	55	BSL 25S G01M
		G1内螺纹	/	148	/	21	/	67	55	BSL 25S G01F

若需咨询其他尾端连接方式，请随时联系我们的技术专家。
我们经验丰富的快速连接器专家，为您提供最贴心的服务。
If you need to inquire about other end fitting, please feel free to contact our technical experts.
Our experienced quick connector experts provide you with the most thoughtful service.

倍仕得电气科技(杭州)股份有限公司
BEISIT ELECTRIC TECH (HANGZHOU) CO.,LTD.

浙江省杭州市临平经济开发区唐梅路1号 邮编: 311100

Add.: 1, Tangmei Rd., Linping Economic Development Area, Hangzhou, Zhejiang 311100, China

Tel: 0086-571-8936 2888 E-mail: info@beisit.com

Http: // www.beisit.com

倍仕得电气科技(深圳)有限公司
BEISIT ELECTRIC TECH (SHENZHEN) CO.,LTD.

深圳龙华区壹成环智中心B座1203-1204单元 邮编: 518109

Add.: Unit 1203-1204, Building B, Yicheng Huanzhi Center, Longhua District, Shenzhen 518109 China

Tel: 0086-755-23730413 E-mail: info@beisit.com

Http: // www.beisit.com

倍仕得电气科技(杭州)股份有限公司天津分公司
BEISIT ELECTRIC TECH (HANGZHOU) CO.,LTD. - TIANJIN BRANCH

天津河东津滨大道万达广场写字楼A座1416 邮编: 300171

Add.: #1416 Building A, Wanda Plaza Office Building, Jinbin Avenue, Hedong District, Tianjin 300171 China

Tel: 0086-22-85453260 E-mail: info@beisit.com

Http: // www.beisit.com



微信公众号



官网



抖音

⚠ We reserve the right to make technical changes or modify the contents of this document without prior notice. All the agreed particulars shall prevail. All rights reserved.

BEISIT®

倍仕得电气科技(杭州)股份有限公司
BEISIT ELECTRIC TECH (HANGZHOU) CO.,LTD.



BTG TYPE Fluid Connector
BTG流体快速连接器

倍仕得园区鸟瞰图
Beisit factory Aeroview



做人, 把人品做好,
做企业, 把产品做好。

董事长: 单永东

产品合集
Product Collection



品牌解析

Brand Definition

The logo for BEISIT, featuring the word "BEISIT" in a bold, italicized sans-serif font. The letters "B", "E", "I", and "S" are red, while "I" and "T" are blue. A registered trademark symbol (®) is located at the end of the word.

"I" stands for "Integrity 诚信"

"I" stands for "International 国际"

"BEST": Best 最好

做诚信的国际企业，以更好的品质服务客户

Functions as an international company of high integrity whose mission is to provide customer with finest products and services

倍仕得

倍：即多，广聚英才；加倍，业精于勤；倍增，高效发展

pronounced as "bei", means "more", gathering more talents; mastery of work comes from more diligence; developing with high efficiency.

仕：人才，德才兼备；仕途，个人和企业前景光明

pronounced as "shi", means "talents", a person with ability and integrity; Both enterprise and individual should have a bright future, indicating the idea of people-oriented.

得：拥有，拥有更高价值

pronounced as "de", means "possess", to create and possess higher value.

广聚英才，共创美好未来

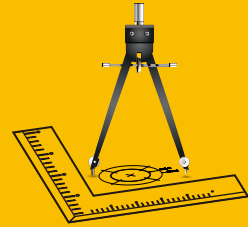
Gather a large number of talents, and create a glorious future

流体连接器净化车间

Quick Fluid Connector Purification Workshop

BEISIT[®]

精密刀具设计制造能力
Design and Manufacture of Precision Cutting Tools.



精密刀具设计制造

Design and Manufacture of Precise Cutting Tools



精密刀具设计制造能力

Design and Manufacture of Precision Cutting Tools

加工精度最高能精确到0.01mm

The machining accuracy can be accurate to 0.01mm

3天提供金属样件

3days to provide metal samples

7天样件交付

7days to deliver samples



企业认证 Company Certifications



信息化系统

Informatization System

BEISIT[®]

高效快捷的信息化系统
Efficient and fast Informatization system.



检测中心 Testing Center



原材料：金属材质检测

The raw materials:metal material testing

密封件：抗老化测试、硬度检测

The sealing:anti-aging test,hardness testing

弹簧：疲劳测试，弹力值检测

The spring:fatigue test,spring force detection



高低温交变湿热试验箱
High and Low Temperature Alternating Humid Heat Test Chamber



流量流阻测试仪
Flow resistance tester



全自动数显弹簧疲劳试验机
Automatic digital display spring fatigue testing machine



机加工零件：粗糙度检测、尺寸测量

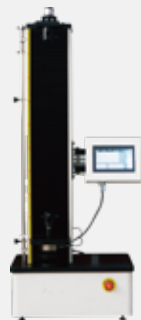
Machined parts:roughness detection,dimensional measurement

表面处理：膜厚检测、盐雾测试

Surface treatment:film thickness detection,salt spray test

产品：耐压测试、密封性测试、流量系数测试、连接力和分开力测试、耐久性测试、
最小爆破压力测试、高温测试、低温测试、互换性测试

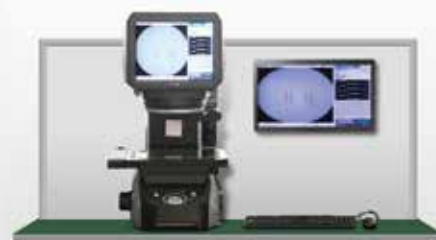
Product:withstand voltage test,sealing test,flow coefficient test,connection and separation
force test,durability test,sinimum burst pressure test,high temperature test,low temperature
test,interchangeability test



全自动数显弹簧拉压力试验机
Automatic digital display spring tension pressure testing machine



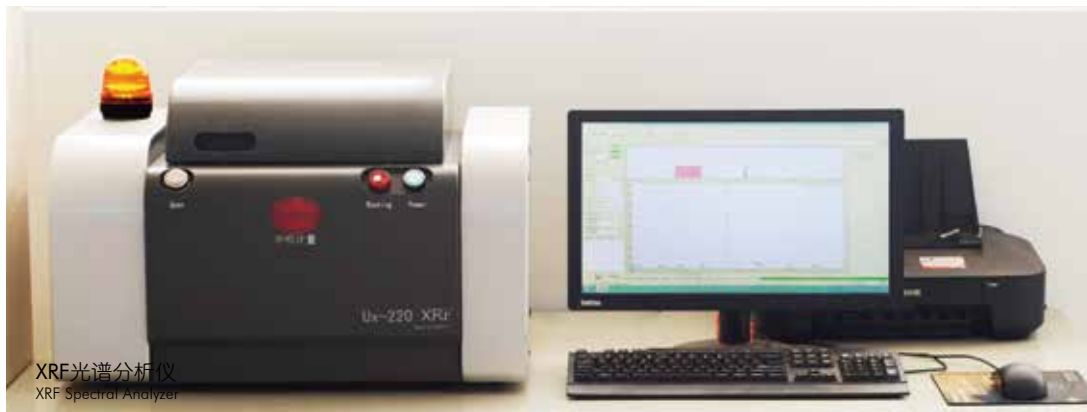
中性盐雾试验箱
Neutral Salt Spray Tester



图像尺寸测量仪
Image dimension measuring instrument



气密性检测仪
Air tightness tester



XRF光谱分析仪
XRF Spectral Analyzer

企业文化

Corporate Culture



倍仕得使命：为全球工业提供最可靠的连接器产品
Mission: To supply most reliable connectors for global industry.

客户价值观：敬畏客户；为客户创造独特价值的决心不动摇
Customer Value: Revere clients; Never waver in determination to create unique value for our clients.

品质价值观：品质如命，只有一次；做出100%合格产品的决心不动摇
Quality Value: Quality as life, only once. Never waver in determination to produce 100% qualified products.

A large, stylized image of the Earth from space, showing the Americas. Overlaid on the globe is a network of glowing blue and white lines and nodes, representing global connectivity and technology.

连接世界 · 连接未来

BTG

流体快速连接器

BTG Fluid Connector



安全环保 Safe & Environmental

- 干式接头，双向平面密封，连接/断开无泄漏。
- 平面密封设计，既方便清洁，又避免介质受污染。
- 插头、插座均配有保护套，防止在运输中密封面受污染。
- Dry Disconnect Couplings, Bi-directional flat sealed design that ensures no leakage during connection and disconnection.
- Flat seal design, which is easy to clean and avoids contamination of the medium.
- Plug and Socket are equipped with protective caps to prevent the sealing surface from being polluted during transportation.

稳定可靠 Stable & Reliable

- 精选的材质配合独特的表面处理使产品坚固可靠的同时，实现高耐腐蚀性、高耐磨性。
- 有多种密封材质O型圈可选，适应不同介质温度需求，保证密封效果长期稳定可靠。
- 插头插座连接处O型圈的径向设计，保证在连接时，阀门打开前已完成密封。
- The selected material combined with unique surface treatment not only makes the product sturdy and reliable, but also achieving high corrosion resistance and wear resistance.
- Various sealing material O-rings are available to meet the temperature requirements of different media and guarantee long-term stable & and reliable sealing performance.
- The radial design of the O-ring at the connection of the Plug and Socket ensures that the sealing function has been completed before the valve is opened during connection.

方便快捷 Convenient

- 旋入即可锁紧连接密封，操作轻松方便。
- 多种颜色选择，快速辨别不同回路。
- 大口径可选手轮，更容易连接和断开。
- Screw-in to lock the connection seal, easy and convenient to operate.
- Multiple color options for quick identification of different circuits.
- Hand wheel is available for large diameter, which is easier to connect and disconnect.

个性化定制 Customized

- 可定制接头尾端匹配接口，方便安装。
- 定制软管集成，美观，降低泄漏风险。
- 其他定制要求请咨询我司。
- Providing customized end-fitting for easy installation.
- Providing customized hose integration with aesthetic appearance and reducing risk of leakage.
- For other customization requirements, please contact us freely.

BTG

流体快速连接器

BTG Fluid Connector



应用领域 Application Fields

- 军工防务 Military defense
- 石化 Bulk chemical and petrochemical
- 生物技术 Biotechnology
- 流体分配和传输系统 Biotechnology Fluid distribution and transfer system
- 铁路槽罐车、槽罐车、船舶、集装箱、储罐和吨桶的装载和卸载
loading and unloading of railway tank cars,tank cars,ship ,containers and tons of drums
- 测试平台连接 The link for the test stand

流体 Fluids

- 石油 Petroleum
- 天然气 Natural gas
- 特殊化学物质 Special chemical
- 可对客户特殊流体针对性开发 It can be developed for customers' special fluids
- ● ● ● ● ●

基础型号 补充选项，后缀信息
BTG 25S G01F - SS - NB

密封圈 Sealing

EP 乙烯橡胶EPDM (默认)	FF 高氟橡胶FFKM
NB 丁腈橡胶NBR	CR 氯丁橡胶CR
FM 氟碳橡胶FPM/FKM/Viton	
FV 氟硅橡胶FVMQ	

材料 Material

SS 不锈钢316L (默认, 型号不体现)
AL 铝合金
SA 不锈钢304

内外螺纹 Internal and external threads

F 内螺纹
M 外螺纹

G/R/N/J螺纹尺寸 Size

01 1吋	03 3吋
32 1-1/2吋	04 4吋
02 2吋	
52 2-1/2吋	

M螺纹尺寸 Size

08 M8螺纹
12 M12螺纹
21 M21螺纹
F3636 法兰孔36x36

连接方式 Connection method

G G螺纹	J UNF螺纹JIC37°锥 ISO8434
R R螺纹	M M螺纹
N NPT螺纹	F 法兰Flange

插头插座 Plug socket

S 插座
P 插头

标称口径 Nominal aperture

25 等效通径20mm	65 等效通径50mm
32 等效通径25mm	80 等效通径60mm
40 等效通径30mm	00 等效通径80mm
50 等效通径40mm	

类目名称 Category name

B 自动连接平面密封	BBT 卡口
S 不含锁紧系统	BTG 三曲槽
T 其他	BSL 钢珠自锁
	SCB 盲插
	SDB 位移盲插
	TPP 推拉平面密封
	TSF 螺纹锁紧连接
	TPB 按钮金属接头

材质 Material	编码 Code	工作温度 Working temperature	应用 Application
丁腈橡胶 NBR	NB	-15 ~ + 100°C	1、一般应用 2、良好的机械强度 1. General applications. 2. High mechanical strength.
氟碳橡胶 FPM、FKM、Viton	FM	-10 ~ + 200°C	1、良好的耐化学性 2、优异的耐高温性能，可用于最高200°C的应用 3、适用于矿物油、合成液压油、燃料、化工产品、碳氢化合物和导热流体回路 1. Good chemical resistance. 2. Outstanding resistance to hightemperatures up to 200°C. 3. Resistance to mineral oils, synthetichydraulic oils, fuels, chemicals.hydrocarbons and coolants.
乙丙橡胶 EPDM	EP	-20 ~ + 150°C	1、优异的耐高温性 2、适用于磷酸盐酯型制动液，冷、热水，蒸汽 3、注意介质回路各部件不能使用含矿物油的情况 1. Excellent resistance to high temperatures. 2. Compatible with phosphate-based brakefluids - esters, hot and cold water, steam. 3. Pay attention to the use of mineral oil in the components of the medium circuit
高氟橡胶 FFKM	FF	0 ~ + 250°C	1、兼具弹性体和聚四氟乙烯耐化学腐蚀性的特点 2、具有很好的耐热性和耐多数化学剂 3、适用于导热流体 1. Combines the qualities of an elastomerwith the chemical resistance of PTFE. 2. Remarkable resistance to heat and mostchemical agents including inorganic andorganic acids. 3. Coolants.
氟硅橡胶 FVMQ	FV	-45 ~ + 175°C	1、最大工作压力：50 bar 2、良好的耐低温和耐高温性能 3、适用于矿物油、燃料 1. Max. working pressure: 50 bar. 2. Good resistance to low and hightemperatures. 3. Resistance to mineral oils, fuels.
聚四氟乙烯 PTFE	PT	-50 ~ + 200°C	1、最大工作压力：80 bar 2、良好的耐化学性 3、优异的耐低温和耐高温性能 4、比弹性体的性能更优异 1. Max. working pressure: 80 bar. 2. Excellent chemical resistance. 3. Very good resistance to low and hightemperatures. 4. Superior performance to elastomers.
氯丁橡胶 CR	CR	-40 ~ + 100°C	耐老化，特别适用于制冷液 Good resistance to ageing andrefrigerants.

为了选择最能满足您应用需求的解决方案，建议向我们提供如下准确信息：

In order to choose the solution that best meets your application needs, it is recommended to provide us with the following accurate information:

- 1、流体类型 2、工作压力 3、工作温度 4、水溶液的盐和酸浓度 5、特别的使用条件
1. Fluid type 2. Work pressure 3. Working temperature 4. Salt and acid concentration of aqueous solution 5. Special usage conditions

若需咨询，请随时联系我们的技术专家。

我们经验丰富的快速连接器专家，为您提供最贴心的服务。

If you need any inquiries, please feel free to contact our technical experts.

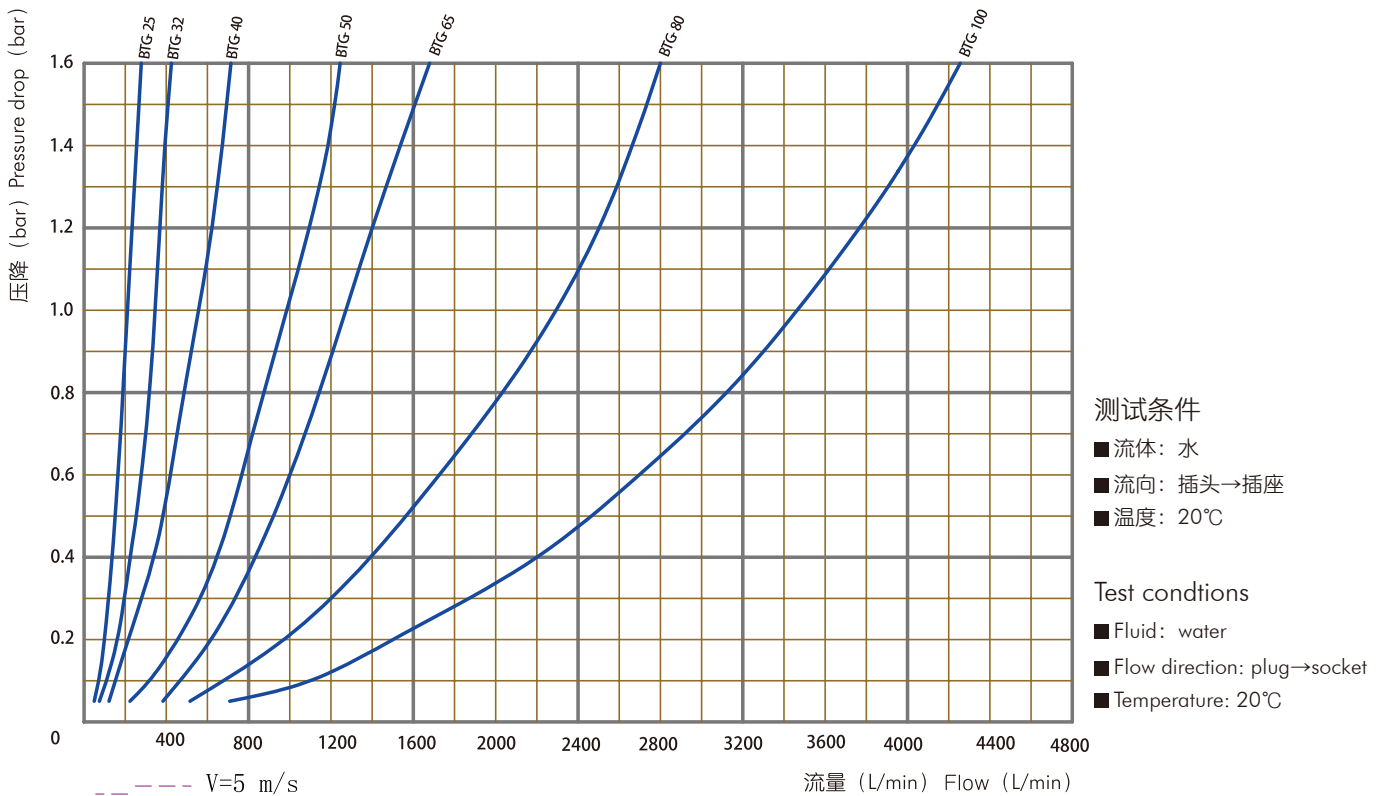
Our experienced quick connector experts provide you with the most thoughtful service.



普通型 Regular Type

产品型号 Product Model	BTG25	BTG32	BTG40	BTG50	BTG65	BTG80	BTG100
额定工作压力 (bar) Working Pressure (bar)	25	25	25	25	25	25	25
Cv值 (Gal/min) Cv (Gal/min)	14	26.8	37.3	67.7	91	158.7	234.6
额定工作流量 (L/Min) Working Flow (L/Min)	94	147	211	376	588	847	1507
单次插拔泄露量 (ml) Leakage Per Disconnection (ml)	0.15	0.22	1.3	2	2.8	3	3.5

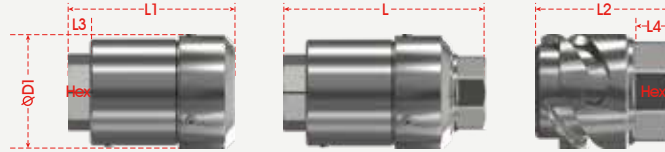
BTG流量曲线
BTG Flow Chart



→ BTG25

插头插座连接图
Plug and socket connection diagram

$L=L1+L2-X$
 $X=39\text{mm}$



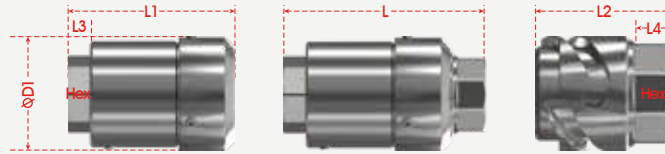
	Picture	End Fitting Type	L1	L2	L3	L4	D1	D2	Hex	Product model
插头		G1"	89	/	11.4	/	59.5	/	38	BTG 25P G01F
		HG/T 20592 DN25 PN25	89	/	18	/	59.5	/	38	BTG 25P F8585
插座		G1"	/	53	/	11.4	/	44	38	BTG 25S G01F
		HG/T 20592 DN25 PN25	/	107	/	18	/	44	38	BTG 25S F8585

若需咨询其他尾端连接方式，请随时联系我们的技术专家。
我们经验丰富的快速连接器专家，为您提供最贴心的服务。
If you need to inquire about other end fitting, please feel free to contact our technical experts.
Our experienced quick connector experts provide you with the most thoughtful service.

→ BTG32

插头插座连接图
Plug and socket connection diagram

$L=L1+L2-X$
 $X=44\text{mm}$



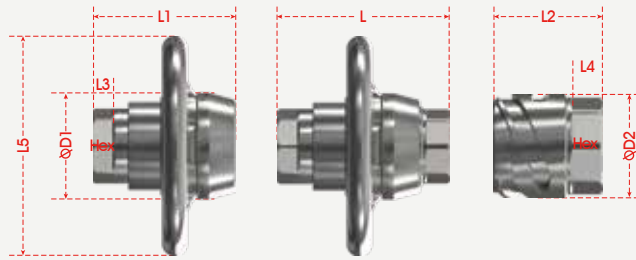
	Picture	End Fitting Type	L1	L2	L3	L4	D1	D2	Hex	Product model
插头		G1-1/4"	98.5	/	12	/	76	/	50	BTG 32P G54F
		HG/T 20592 DN32 PN25	116.5	/	18	/	76	/	50	BTG 32P F100100
插座		G1-1/4"	/	65	/	12	/	54	50	BTG 32S G54F
		HG/T 20592 DN32 PN25	/	77	/	12	/	54	50	BTG 32S F100100

若需咨询其他尾端连接方式，请随时联系我们的技术专家。
我们经验丰富的快速连接器专家，为您提供最贴心的服务。
If you need to inquire about other end fitting, please feel free to contact our technical experts.
Our experienced quick connector experts provide you with the most thoughtful service.

→ BTG40

插头插座连接图
Plug and socket connection diagram

$L = L1 + L2 - X$
 $X = 49\text{mm}$



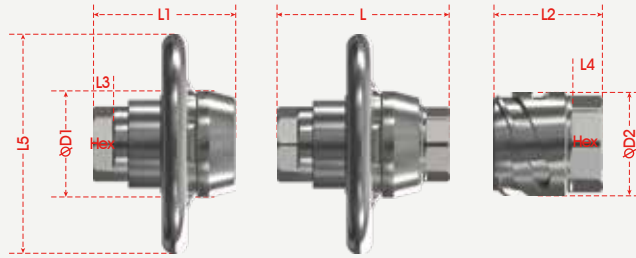
	Picture	End Fitting Type	L1	L2	L3	L4	L5	D1	D2	Hex	Product model
插头		G1-1/2"	115	/	16	/	200	89	/	55	BTG 40P G32F
		HG/T 20592 DN40 PN25	133	/	18	/	200	89	/	55	BTG 40P F110110
插座		G1-1/2"	/	76	/	16	/	/	62.5	55	BTG 40S G32F
		HG/T 20592 DN40 PN25	/	94	/	18	/	/	62.5	55	BTG 40S F110110

若需咨询其他尾端连接方式，请随时联系我们的技术专家。
我们经验丰富的快速连接器专家，为您提供最贴心的服务。
If you need to inquire about other end fitting, please feel free to contact our technical experts.
Our experienced quick connector experts provide you with the most thoughtful service.

→ BTG50

插头插座连接图
Plug and socket connection diagram

$L = L1 + L2 - X$
 $X = 56.5\text{mm}$



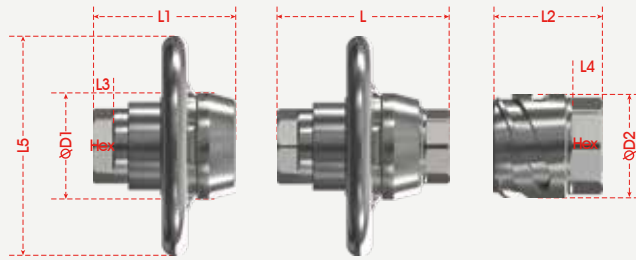
	Picture	End Fitting Type	L1	L2	L3	L4	L5	D1	D2	Hex	Product model
插头		G2"	143	/	19	/	220	106	/	70	BTG 50P G02F
		HG/T 20592 DN50 PN25	166	/	21	/	220	106	/	70	BTG 50P F125125
插座		G2"	/	85.5	/	19	/	/	79.6	70	BTG 50S G02F
		HG/T 20592 DN50 PN25	/	107	/	21	/	/	79.6	70	BTG 50S F125125

若需咨询其他尾端连接方式，请随时联系我们的技术专家。
我们经验丰富的快速连接器专家，为您提供最贴心的服务。
If you need to inquire about other end fitting, please feel free to contact our technical experts.
Our experienced quick connector experts provide you with the most thoughtful service.

→ BTG65

插头插座连接图
Plug and socket connection diagram

$L=L1+L2-X$
 $X=65\text{mm}$



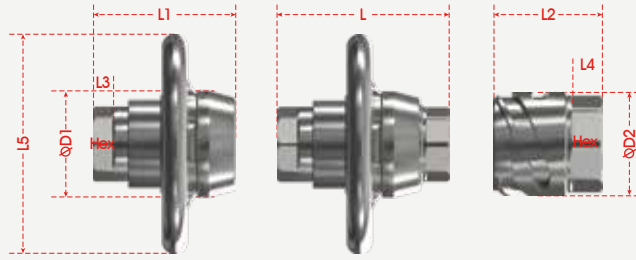
	Picture	End Fitting Type	L1	L2	L3	L4	L5	D1	D2	Hex	Product model
插头		G2-1/2"	161	/	23	/	240	121	/	85	BTG 65P G52F
		HG/T 20592 DN65 PN25	179	/	18	/	240	121	/	85	BTG 65P F145145
插座		G2-1/2"	/	95	/	23	/	/	94.2	85	BTG 65S G52F
		HG/T 20592 DN65 PN25	/	113	/	18	/	/	94	85	BTG 65S F145145

若需咨询其他尾端连接方式，请随时联系我们的技术专家。
我们经验丰富的快速连接器专家，为您提供最贴心的服务。
If you need to inquire about other end fitting, please feel free to contact our technical experts.
Our experienced quick connector experts provide you with the most thoughtful service.

→ BTG80

插头插座连接图
Plug and socket connection diagram

$L=L1+L2-X$
 $X=74\text{mm}$



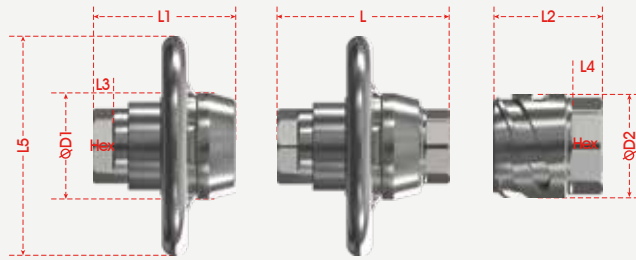
	Picture	End Fitting Type	L1	L2	L3	L4	L5	D1	D2	Hex	Product model
插头		G3"	183	/	22	/	270	148	/	95	BTG 80P G03F
		HG/T 20592 DN80 PN25	203	/	20	/	270	148	/	95	BTG 80P F160160
插座		G3"	/	105	/	22	/	/	118	95	BTG 80S G03F
		HG/T 20592 DN80 PN25	/	125	/	20	/	/	118	95	BTG 80S F160160

若需咨询其他尾端连接方式，请随时联系我们的技术专家。
我们经验丰富的快速连接器专家，为您提供最贴心的服务。
If you need to inquire about other end fitting, please feel free to contact our technical experts.
Our experienced quick connector experts provide you with the most thoughtful service.

→ BTG100

插头插座连接图
Plug and socket connection diagram

$L = L1 + L2 - X$
 $X = 83.5\text{mm}$



	Picture	End Fitting Type	L1	L2	L3	L4	L5	D1	D2	Hex	Product model
插头		G4"	199	/	22	/	330	180	/	125	BTG 80P G04F
		HG/T 20592 DN100 PN25	219	/	20	/	330	180	/	125	BTG 80P F190190
插座		G4"	/	113	/	22	/	/	146	125	BTG 80S G04F
		HG/T 20592 DN100 PN25	/	133	/	20	/	/	220	125	BTG 80S F190190

若需咨询其他尾端连接方式，请随时联系我们的技术专家。
我们经验丰富的快速连接器专家，为您提供最贴心的服务。
If you need to inquire about other end fitting, please feel free to contact our technical experts.
Our experienced quick connector experts provide you with the most thoughtful service.

倍仕得电气科技(杭州)股份有限公司
BEISIT ELECTRIC TECH (HANGZHOU) CO.,LTD.

浙江省杭州市临平经济开发区唐梅路1号 邮编: 311100

Add.: 1, Tangmei Rd., Linping Economic Development Area, Hangzhou, Zhejiang 311100, China

Tel: 0086-571-8936 2888 E-mail: info@beisit.com

Http: // www.beisit.com

倍仕得电气科技(深圳)有限公司
BEISIT ELECTRIC TECH (SHENZHEN) CO.,LTD.

深圳龙华区壹成环智中心B座1203-1204单元 邮编: 518109

Add.: Unit 1203-1204, Building B, Yicheng Huanzhi Center, Longhua District, Shenzhen 518109 China

Tel: 0086-755-23730413 E-mail: info@beisit.com

Http: // www.beisit.com

倍仕得电气科技(杭州)股份有限公司天津分公司
BEISIT ELECTRIC TECH (HANGZHOU) CO.,LTD. - TIANJIN BRANCH

天津河东津滨大道万达广场写字楼A座1416 邮编: 300171

Add.: #1416 Building A, Wanda Plaza Office Building, Jinbin Avenue, Hedong District, Tianjin 300171 China

Tel: 0086-22-85453260 E-mail: info@beisit.com

Http: // www.beisit.com



微信公众号



官网



抖音

⚠ We reserve the right to make technical changes or modify the contents of this document without prior notice. All the agreed particulars shall prevail. All rights reserved.



倍仕得电气科技(杭州)股份有限公司
BEISIT ELECTRIC TECH (HANGZHOU) CO.,LTD.



TNP Fluid Connector

TNP流体快速连接器

倍仕得园区鸟瞰图
Beisit factory Aeroview



做人, 把人品做好,
做企业, 把产品做好。

董事长: 单以乐

产品合集
Product Collection



品牌解析

Brand Definition

BEISIT[®]

"I" stands for "Integrity 诚信"

"I" stands for "International 国际"

"BEST": Best 最好

做诚信的国际企业，以更好的品质服务客户

Functions as an international company of high integrity whose mission is to provide customer with finest products and services

倍仕得

倍：即多，广聚英才；加倍，业精于勤；倍增，高效发展

pronounced as "bei", means "more", gathering more talents; mastery of work comes from more diligence; developing with high efficiency.

仕：人才，德才兼备；仕途，个人和企业前景光明

pronounced as "shi", means "talents", a person with ability and integrity; Both enterprise and individual should have a bright future, indicating the idea of people-oriented.

得：拥有，拥有更高价值

pronounced as "de", means "possess", to create and possess higher value.

广聚英才，共创美好未来

Gather a large number of talents, and create a glorious future

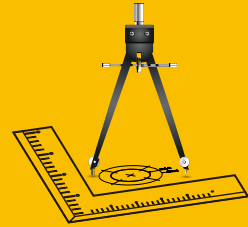
流体连接器净化车间

Quick Fluid Connector Purification Workshop

BEISIT[®]

精密刀具设计制造能力

Design and Manufacture of Precision Cutting Tools.



精密刀具设计制造

Design and Manufacture of Precise Cutting Tools



精密刀具设计制造能力

Design and Manufacture of Precision Cutting Tools

加工精度最高能精确到0.01mm

The machining accuracy can be accurate to 0.01mm

3天提供金属样件

3days to provide metal samples

7天样件交付

7days to deliver samples



企业认证 Company Certifications



信息化系统

Informatization System



高效快捷的信息化系统
Efficient and fast Informatization system.



检测中心
Testing Center



原材料：金属材质检测
The raw materials:metal material testing
密封件：抗老化测试、硬度检测
The sealing:anti-aging test,hardness testing
弹簧：疲劳测试，弹力值检测
The spring:fatigue test,spring force detection



高低温交变湿热试验箱
High and Low Temperature Alternating Humid Heat Test Chamber



流量流阻测试仪
Flow resistance tester



全自动数显弹簧疲劳试验机
Automatic digital display spring fatigue testing machine



机加工零件：粗糙度检测、尺寸测量

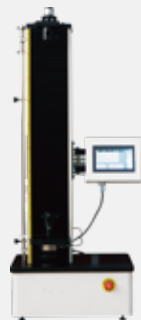
Machined parts:roughness detection,dimensional measurement

表面处理：膜厚检测、盐雾测试

Surface treatment:film thickness detection,salt spray test

产品：耐压测试、密封性测试、流量系数测试、连接力和分开力测试、耐久性测试、
最小爆破压力测试、高温测试、低温测试、互换性测试

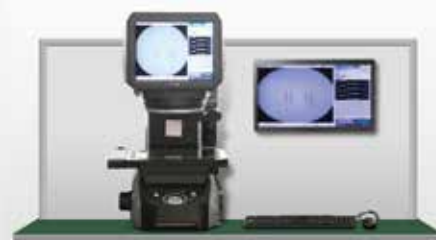
Product:withstand voltage test,sealing test,flow coefficient test,connection and separation
force test,durability test,sinimum burst pressure test,high temperature test,low temperature
test,interchangeability test



全自动数显弹簧拉压力试验机
Automatic digital display spring tension pressure testing machine



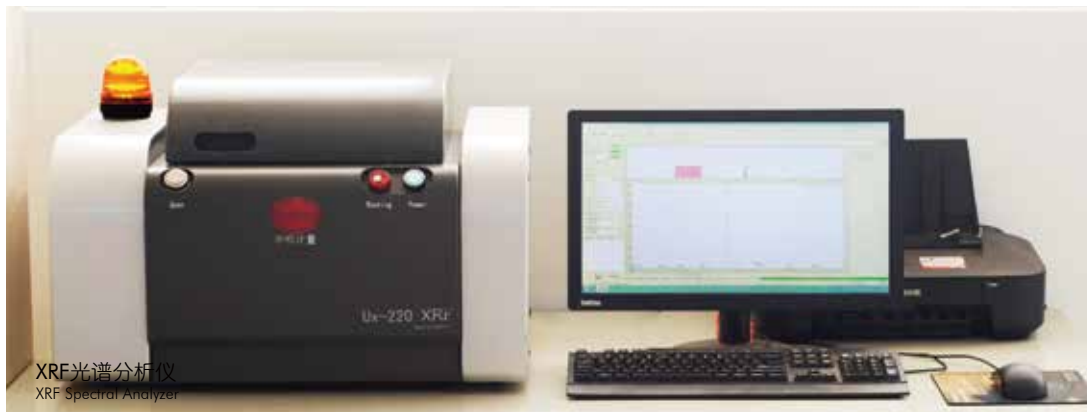
中性盐雾试验箱
Neutral Salt Spray Tester



图像尺寸测量仪
Image dimension measuring instrument



气密性检测仪
Air tightness tester



XRF光谱分析仪
XRF Spectral Analyzer

企业文化

Corporate Culture



倍仕得使命：为全球工业提供最可靠的连接器产品
Mission: To supply most reliable connectors for global industry.

客户价值观：敬畏客户；为客户创造独特价值的决心不动摇
Customer Value: Revere clients; Never waver in determination to create unique value for our clients.

品质价值观：品质如命，只有一次；做出100%合格产品的决心不动摇
Quality Value: Quality as life, only once. Never waver in determination to produce 100% qualified products.

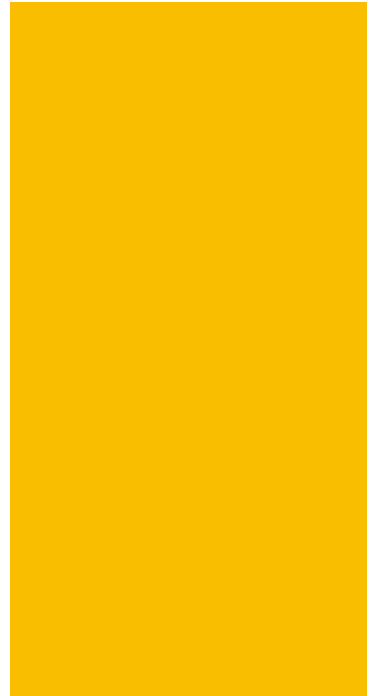
A large image of a globe with glowing blue and white network lines overlaid on it, symbolizing global connectivity. The globe is centered on the Americas.

连接世界 · 连接未来

TNP

流体快速连接器

TNP Fluid Connector



安全环保 Safe & Environmental

- TNP系列产品，采用塑料圆珠锁紧，不损坏被测试件。
- TNP系列产品，可以选择带阀，以满足断开即截止需求。
- 接头均配有保护套，防止在运输中密封面受污染。
- TNP series products, the adoption of plastic ball locking, will not damage the tested parts.
- The TNP series, with optional valving, is available for disconnect-to-shutoff requirements.
- Connector is equipped with protective caps to prevent the sealing surface from being polluted during transportation.

稳定可靠 Stable & Reliable

- 多排圆珠锁紧，保证连接时的锁紧稳定，密封可靠。
- TNP系列产品，本体采用不锈钢材质，推拉环采用铜镀镍材质，使得接头更耐用，又保护被测试件。
- 有多种密封材质O型圈可选，适应不同介质温度需求，保证密封效果长期稳定可靠。
- Multi-row ball locking ensures stable locking and reliable sealing when connecting.
- TNP series products consist of stainless steel bodies and nickel-plated brass sleeves, which provide durability itself and protection for the tested parts.
- A variety of sealing material O-rings are available to meet the temperature requirements of different media and guarantees long term stable & reliable sealing performance.

方便快捷 Convenient

- 圆珠锁紧半自动连接，推入即可锁紧连接并密封，操作轻松，方便快捷。
- 每款TNP产品都可以适配较大的公差范围，提供适配多款测试件的可能性，减少客户换型困扰。
- TNP系列产品可以提供90度转接头，更方便操作。
- 凸肩和滚花的长锁紧环更容易抓握和断开。
- Ball locking semi-automatic connection, push-in to lock the connection and seal, easy to operate, convenient and quick.
- Each TNP product provides a wide range of tolerances, offering the possibility of adapting to a wide range of tested parts and reducing the hassle of changeover for customers.
- The TNP series can be fitted with a 90-degree adapter for easier handling.
- Long locking rings with convex shoulder and knurls for easier gripping and disconnecting.

个性化定制 Customized

- 可定制接头尾端匹配接口，方便安装。
- 定制软管集成，美观，降低泄漏风险。
- 其他定制要求请咨询我司。
- Providing customized end-fitting for easy installation.
- Providing customized hose integration with aesthetic appearance and reducing risk of leakage.
- For other customization requirements, please contact us freely.

TNP**流体快速连接器**

TNP Fluid Connector

**应用领域 Application Fields**

- 三电测试 Military defense, Aerospace and other fields

适用介质 Fluids

- 冷却液 Coolant
- 水-乙二醇 Glycol Water
- 导热油 Heat transfer oils
- 酯类 Esters
- 煤油 kerosene

.....

基础型号 补充选项, 后缀信息
TNP 16V G38F NW- BR - FV - 90

角度 Angle
直通 (默认, 型号不体现)
90 90度弯头
45 135度弯头

密封圈 Sealing
乙丙烯橡胶EPDM (默认, 型号不体现) FF 高氟橡胶FFKM
NB 丁晴橡胶NBR CR 氯丁橡胶CR
FM 氟碳橡胶FPM/FKM/Viton
FV 氟硅橡胶FVMQ

材料 Material
铜+不锈钢304 (默认, 型号不体现)
BR 铜
SA 不锈钢304

接头型号 Connector Size
NW NW型号
SAE SAE型号
MDC MDC型号

内外螺纹 Internal and external threads
F 内螺纹
M 外螺纹

G/R/N/J螺纹尺寸 Size		M螺纹尺寸 Size	
18	1/8	32	1-1/2吋
14	1/4	01	1吋
38	3/8		
12	1/2		
34	3/4		
		08	M8螺纹
		12	M12螺纹
		21	M21螺纹
		H08	接08内径的橡胶软管
		T812	接8x12的塑料管

连接方式 Connection method
G G螺纹
M M螺纹
H 软管Hose
T 扣压塑料管TUBE

是否带阀 Is it equipped with a valve
有V 带阀
无V 无阀

接头型号大小 Connector Size	
04	4mm
06	6mm
08	8mm
14	14mm
16	16mm
20	20mm

类目名称 Category name
T 其他
N 非金属圆珠
P 推拉环

材质 Material	编码 Code	工作温度 Working temperature	应用 Application
丁腈橡胶 NBR	NB	-15 ~ + 100°C	1、一般应用 2、良好的机械强度 1. General applications. 2. High mechanical strength.
氟碳橡胶 FPM、FKM、Viton	FM	-10 ~ + 200°C	1、良好的耐化学性 2、优异的耐高温性能，可用于最高200°C的应用 3、适用于矿物油、合成液压油、燃料、化工产品、碳氢化合物和导热流体回路 1. Good chemical resistance. 2. Outstanding resistance to hightemperatures up to 200°C. 3. Resistance to mineral oils, synthetichydraulic oils, fuels, chemicals.hydrocarbons and coolants.
乙丙橡胶 EPDM	EP	-20 ~ + 150°C	1、优异的耐高温性 2、适用于磷酸盐酯型制动液，冷、热水，蒸汽 3、注意介质回路各部件不能使用含矿物油的情况 1. Excellent resistance to high temperatures. 2. Compatible with phosphate-based brakefluids - esters, hot and cold water, steam. 3. Pay attention to the use of mineral oil in the components of the medium circuit
高氟橡胶 FFKM	FF	0 ~ + 250°C	1、兼具弹性体和聚四氟乙烯耐化学腐蚀性的特点 2、具有很好的耐热性和耐多数化学剂 3、适用于导热流体 1. Combines the qualities of an elastomerwith the chemical resistance of PTFE. 2. Remarkable resistance to heat and mostchemical agents including inorganic andorganic acids. 3. Coolants.
氟硅橡胶 FVMQ	FV	-45 ~ + 175°C	1、最大工作压力：50 bar 2、良好的耐低温和耐高温性能 3、适用于矿物油、燃料 1. Max. working pressure: 50 bar. 2. Good resistance to low and hightemperatures. 3. Resistance to mineral oils, fuels.
聚四氟乙烯 PTFE	PT	-50 ~ + 200°C	1、最大工作压力：80 bar 2、良好的耐化学性 3、优异的耐低温和耐高温性能 4、比弹性体的性能更优异 1. Max. working pressure: 80 bar. 2. Excellent chemical resistance. 3. Very good resistance to low and hightemperatures. 4. Superior performance to elastomers.
氯丁橡胶 CR	CR	-40 ~ + 100°C	耐老化，特别适用于制冷液 Good resistance to ageing andrefrigerants.

为了选择最能满足您应用需求的解决方案，建议向我们提供如下准确信息：

In order to choose the solution that best meets your application needs, it is recommended to provide us with the following accurate information:

- 1、流体类型 2、工作压力 3、工作温度 4、水溶液的盐和酸浓度 5、特别的使用条件
1. Fluid type 2. Work pressure 3. Working temperature 4. Salt and acid concentration of aqueous solution 5. Special usage conditions

若需咨询，请随时联系我们的技术专家。

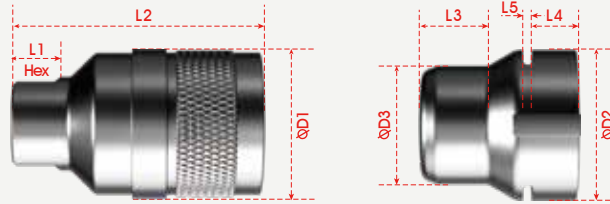
我们经验丰富的快速连接器专家，为您提供最贴心的服务。

If you need any inquiries, please feel free to contact our technical experts.

Our experienced quick connector experts provide you with the most thoughtful service.

→ TNP 12-NW

插头插座连接图
Plug and socket connection diagram

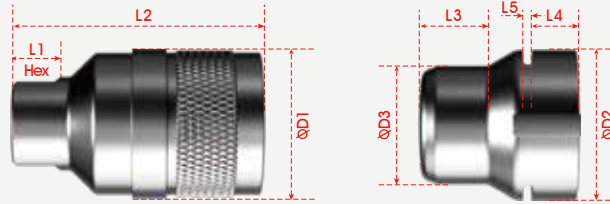


	Picture	End Fitting Type	L1	L2	L3	L4	L5	D1	D2	D3	Hex	Product model
插座		G3/8内螺纹	13	56	/	/	/	34	/	/	22	TNP 12 G38F-NW
插头		/	/	/	14~24	>4	1.8	/	21.5 ^{+0.02} _{-0.02}	16.3 ^{-0.03}	/	NW 12
		/	/	/	14~24	>4	1.8	/	21.5 ^{+0.02} _{-0.02}	16.3 ^{-0.03}	/	NW 12
		/	/	/	14~24	>4	1.8	/	21.5 ^{+0.02} _{-0.02}	16.3 ^{-0.03}	/	NW 12
		/	/	/	14~24	>4	1.8	/	21.5 ^{+0.02} _{-0.02}	16.3 ^{-0.03}	/	NW 12
		/	/	/	14~24	>4	1.8	/	21.5 ^{+0.02} _{-0.02}	16.3 ^{-0.03}	/	NW 12
		/	/	/	14~24	>4	1.8	/	21.5 ^{+0.02} _{-0.02}	16.3 ^{-0.03}	/	NW 12

若需咨询其他尾端连接方式，请随时联系我们的技术专家。
我们经验丰富的快速连接器专家，为您提供最贴心的服务。
If you need to inquire about other end fitting, please feel free to contact our technical experts.
Our experienced quick connector experts provide you with the most thoughtful service.

→ TNP 14-NW

插头插座连接图
Plug and socket connection diagram

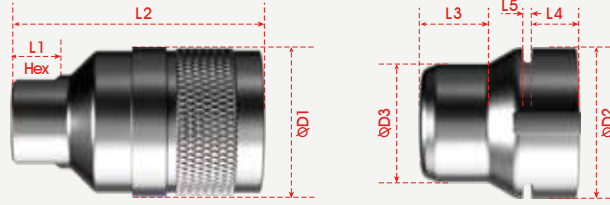


	Picture	End Fitting Type	L1	L2	L3	L4	L5	D1	D2	D3	Hex	Product model
插座		G3/8内螺纹	13	60	/	/	/	37	/	/	22	TNP 14 G38F-NW
插头		/	/	/	14~24	>4	1.8	/	25.0 ^{+0.02} _{-0.02}	20.5 ^{-0.3}	/	NW 14
		/	/	/	14~24	>4	1.8	/	25.0 ^{+0.02} _{-0.02}	20.5 ^{-0.3}	/	NW 14
		/	/	/	14~24	>4	1.8	/	25.0 ^{+0.02} _{-0.02}	20.5 ^{-0.3}	/	NW 14
		/	/	/	14~24	>4	1.8	/	25.0 ^{+0.02} _{-0.02}	20.5 ^{-0.3}	/	NW 14
		/	/	/	14~24	>4	1.8	/	25.0 ^{+0.02} _{-0.02}	20.5 ^{-0.3}	/	NW 14
		/	/	/	14~24	>4	1.8	/	25.0 ^{+0.02} _{-0.02}	20.5 ^{-0.3}	/	NW 14

若需咨询其他尾端连接方式，请随时联系我们的技术专家。
我们经验丰富的快速连接器专家，为您提供最贴心的服务。
If you need to inquire about other end fitting, please feel free to contact our technical experts.
Our experienced quick connector experts provide you with the most thoughtful service.

→ TNP 16-NW

插头插座连接图
Plug and socket connection diagram

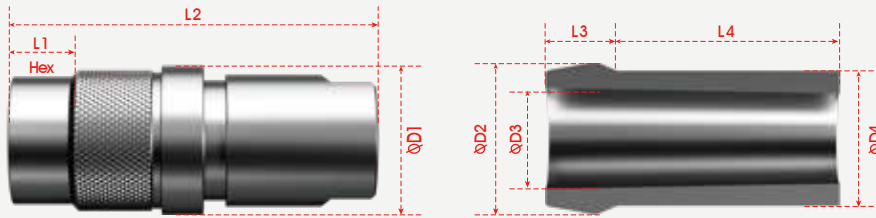


Picture	End Fitting Type	L1	L2	L3	L4	L5	D1	D2	D3	Hex	Product model
插座	G3/8内螺纹	13	65.6	/	/	/	40	/	/	22	TNP 16 G38F-NW
插头	/	/	/	14~24	>4	1.8	/	28.3 ^{+0.02} _{-0.02}	22.3 ^{-0.03}	/	NW 16
	/	/	/	14~24	>4	1.8	/	28.3 ^{+0.02} _{-0.02}	22.3 ^{-0.03}	/	NW 16
	/	/	/	14~24	>4	1.8	/	28.3 ^{+0.02} _{-0.02}	22.3 ^{-0.03}	/	NW 16
	/	/	/	14~24	>4	1.8	/	28.3 ^{+0.02} _{-0.02}	22.3 ^{-0.03}	/	NW 16
	/	/	/	14~24	>4	1.8	/	28.3 ^{+0.02} _{-0.02}	22.3 ^{-0.03}	/	NW 16
	/	/	/	14~24	>4	1.8	/	28.3 ^{+0.02} _{-0.02}	22.3 ^{-0.03}	/	NW 16

若需咨询其他尾端连接方式，请随时联系我们的技术专家。
我们经验丰富的快速连接器专家，为您提供最贴心的服务。
If you need to inquire about other end fitting, please feel free to contact our technical experts.
Our experienced quick connector experts provide you with the most thoughtful service.

→ TNP 16-MDC

插头插座连接图
Plug and socket connection diagram

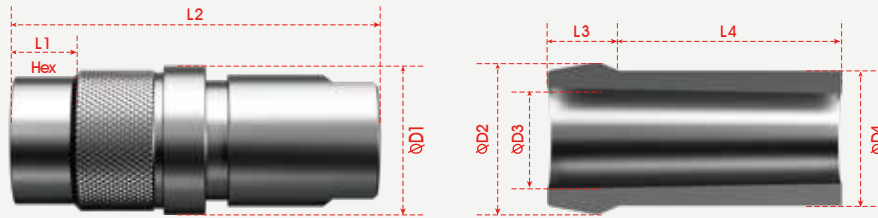


	Picture	End Fitting Type	L1	L2	L3	L4	D1	D2	D3	D4	Hex	Product model
插座		G3/8内螺纹	13	82	/	/	34	/	/	/	24	TNP 16 G38F-MDC
插头		/	/	/	4~9	>16	/	18.1 ⁰ ₋₁₀	13.0 ^{+1.5} _{-1.5}	16.0 ^{+0.15}	/	MDC 16
		/	/	/	4~9	>16	/	18.1 ⁰ ₋₁₀	13.0 ^{+1.5} _{-1.5}	16.0 ^{+0.15}	/	MDC 16
		/	/	/	4~9	>16	/	18.1 ⁰ ₋₁₀	13.0 ^{+1.5} _{-1.5}	16.0 ^{+0.15}	/	MDC 16

若需咨询其他尾端连接方式，请随时联系我们的技术专家。
我们经验丰富的快速连接器专家，为您提供最贴心的服务。
If you need to inquire about other end fitting, please feel free to contact our technical experts.
Our experienced quick connector experts provide you with the most thoughtful service.

→ TNP 20-MDC

插头插座连接图
Plug and socket connection diagram

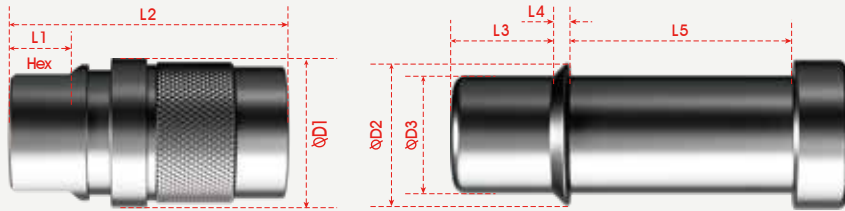


	Picture	End Fitting Type	L1	L2	L3	L4	D1	D2	D3	D4	Hex	Product model
插座		G3/8内螺纹	13	90	/	/	40	/	/	/	24	TNP 20 G38F-MDC
插头		/	/	/	4~9	>16	/	22.4 ⁰ ₋₁₀	16.0 ^{+1.5} _{-1.5}	20.0 ^{+0.15}	/	MDC 20
		/	/	/	4~9	>16	/	22.4 ⁰ ₋₁₀	16.0 ^{+1.5} _{-1.5}	20.0 ^{+0.15}	/	MDC 20
		/	/	/	4~9	>16	/	22.4 ⁰ ₋₁₀	16.0 ^{+1.5} _{-1.5}	20.0 ^{+0.15}	/	MDC 20

若需咨询其他尾端连接方式，请随时联系我们的技术专家。
我们经验丰富的快速连接器专家，为您提供最贴心的服务。
If you need to inquire about other end fitting, please feel free to contact our technical experts.
Our experienced quick connector experts provide you with the most thoughtful service.

→ TNP 06-SAE

插头插座连接图
Plug and socket connection diagram

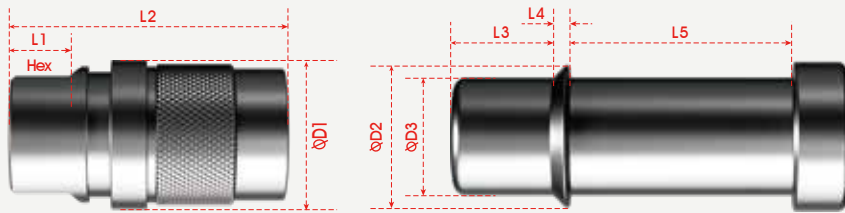


	Picture	End Fitting Type	L1	L2	L3	L4	L5	D1	D2	D3	Hex	Product model
插座		G1/4内螺纹	12	58	/	/	/	26	/	/	24	TNP 06 G14F-SAE
插头		/	/	/	8~33	<3	>8	/	10.1 ^{+0.1}	6.5 ^{+0.1}	/	SAE 06
		/	/	/	8~33	<3	>8	/	10.1 ^{+0.1}	6.5 ^{+0.1}	/	SAE 06

若需咨询其他尾端连接方式，请随时联系我们的技术专家。
我们经验丰富的快速连接器专家，为您提供最贴心的服务。
If you need to inquire about other end fitting, please feel free to contact our technical experts.
Our experienced quick connector experts provide you with the most thoughtful service.

→ TNP 16-SAE

插头插座连接图
Plug and socket connection diagram

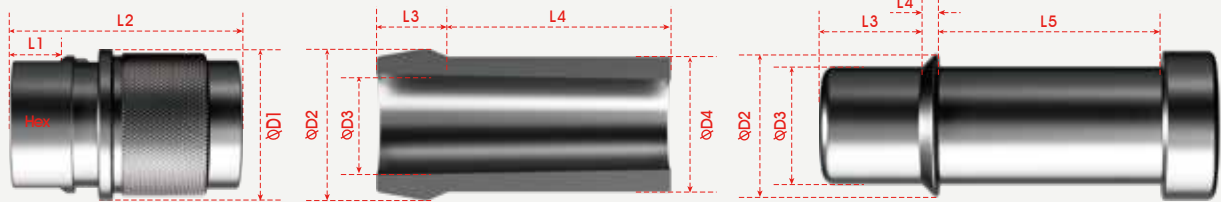


	Picture	End Fitting Type	L1	L2	L3	L4	L5	D1	D2	D3	Hex	Product model
插座		G1/4内螺纹	13	62.1	/	/	/	33	/	/	24	TNP 16 G14F-SAE
插头		/	/	/	13~34	<3.5	>9	/	19.4 ⁰ ₋₁	16.0 ⁰ _{±3}	/	SAE 16
		/	/	/	13~34	<3.5	>9	/	19.4 ⁰ ₋₁	16.0 ⁰ _{±3}	/	SAE 16

若需咨询其他尾端连接方式，请随时联系我们的技术专家。
我们经验丰富的快速连接器专家，为您提供最贴心的服务。
If you need to inquire about other end fitting, please feel free to contact our technical experts.
Our experienced quick connector experts provide you with the most thoughtful service.

→ TNP 16-MDC-SAE

插头插座连接图
Plug and socket connection diagram



	Picture	End Fitting Type	L1	L2	L3	L4	L5	D1	D2	D3	D4	Hex	Product model
插座		G3/8内螺纹	13	48.5	/	/	/	33	/	/	/	24	TNP 16 G38F- MDC-SAE
插头		/	/	/	8~9	>21	/	/	18.1 ^{+0.10}	/	16.0 ^{+0.15}	/	MDC 16
		/	/	/	>25	<2	>8	/	19.4 ^{+0.10}	16.0 ^{-0.03}	/	/	SAE 16

若需咨询其他尾端连接方式，请随时联系我们的技术专家。
我们经验丰富的快速连接器专家，为您提供最贴心的服务。
If you need to inquire about other end fitting, please feel free to contact our technical experts.
Our experienced quick connector experts provide you with the most thoughtful service.

倍仕得电气科技(杭州)股份有限公司
BEISIT ELECTRIC TECH (HANGZHOU) CO.,LTD.

浙江省杭州市临平经济开发区唐梅路1号 邮编: 311100

Add.: 1, Tangmei Rd., Linping Economic Development Area, Hangzhou, Zhejiang 311100, China

Tel: 0086-571-8936 2888 E-mail: info@beisit.com

Http: // www.beisit.com

倍仕得电气科技(深圳)有限公司
BEISIT ELECTRIC TECH (SHENZHEN) CO.,LTD.

深圳龙华区壹成环智中心B座1203-1204单元 邮编: 518109

Add.: Unit 1203-1204, Building B, Yicheng Huanzhi Center, Longhua District, Shenzhen 518109 China

Tel: 0086-755-23730413 E-mail: info@beisit.com

Http: // www.beisit.com

倍仕得电气科技(杭州)股份有限公司天津分公司
BEISIT ELECTRIC TECH (HANGZHOU) CO.,LTD. - TIANJIN BRANCH

天津河东津滨大道万达广场写字楼A座1416 邮编: 300171

Add.: #1416 Building A, Wanda Plaza Office Building, Jinbin Avenue, Hedong District, Tianjin 300171 China

Tel: 0086-22-85453260 E-mail: info@beisit.com

Http: // www.beisit.com



微信公众号



官网



抖音

⚠ We reserve the right to make technical changes or modify the contents of this document without prior notice. All the agreed particulars shall prevail. All rights reserved.

BEISIT®

倍仕得电气科技(杭州)股份有限公司
BEISIT ELECTRIC TECH (HANGZHOU) CO.,LTD.



TPP Fluid Connector
TPP流体快速连接器

倍仕得园区鸟瞰图
Beisit factory Aeroview



做人, 把人品做好,
做企业, 把产品做好。

董事长: 李永乐

产品合集
Product Collection



品牌解析

Brand Definition



"I" stands for "Integrity 诚信"

"I" stands for "International 国际"

"BEST": Best 最好

做诚信的国际企业，以更好的品质服务客户

Functions as an international company of high integrity whose mission is to provide customer with finest products and services

倍仕得

倍：即多，广聚英才；加倍，业精于勤；倍增，高效发展

pronounced as "bei", means "more", gathering more talents; mastery of work comes from more diligence; developing with high efficiency.

仕：人才，德才兼备；仕途，个人和企业前景光明

pronounced as "shi", means "talents", a person with ability and integrity; Both enterprise and individual should have a bright future, indicating the idea of people-oriented.

得：拥有，拥有更高价值

pronounced as "de", means "possess", to create and possess higher value.

广聚英才，共创美好未来

Gather a large number of talents, and create a glorious future

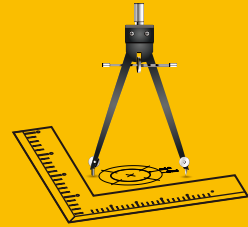
流体连接器净化车间

Quick Fluid Connector Purification Workshop

BEISIT[®]

精密刀具设计制造能力

Design and Manufacture of Precision Cutting Tools.



精密刀具设计制造

Design and Manufacture of Precise Cutting Tools



精密刀具设计制造能力

Design and Manufacture of Precision Cutting Tools

加工精度最高能精确到0.01mm

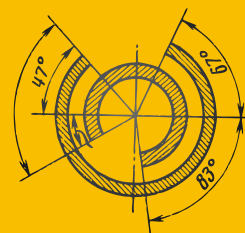
The machining accuracy can be accurate to 0.01mm

3天提供金属样件

3days to provide metal samples

7天样件交付

7days to deliver samples



企业认证 Company Certifications



信息化系统

Informatization System

BEISIT[®]

高效快捷的信息化系统
Efficient and fast Informatization system.



检测中心 Testing Center



原材料：金属材质检测

The raw materials:metal material testing

密封件：抗老化测试、硬度检测

The sealing:anti-aging test,hardness testing

弹簧：疲劳测试，弹力值检测

The spring:fatigue test,spring force detection



高低温交变湿热试验箱
High and Low Temperature Alternating Humid Heat Test Chamber



流量流阻测试仪
Flow resistance tester



全自动数显弹簧疲劳试验机
Automatic digital display spring fatigue testing machine



机加工零件：粗糙度检测、尺寸测量

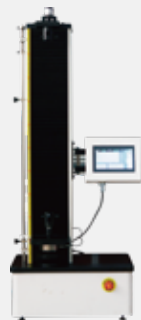
Machined parts:roughness detection,dimensional measurement

表面处理：膜厚检测、盐雾测试

Surface treatment:film thickness detection,salt spray test

产品：耐压测试、密封性测试、流量系数测试、连接力和分开力测试、耐久性测试、
最小爆破压力测试、高温测试、低温测试、互换性测试

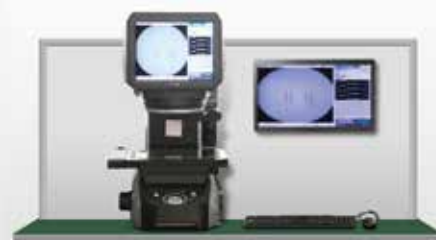
Product:withstand voltage test,sealing test,flow coefficient test,connection and separation
force test,durability test,sinimum burst pressure test,high temperature test,low temperature
test,interchangeability test



全自动数显弹簧拉压力试验机
Automatic digital display spring tension pressure testing machine



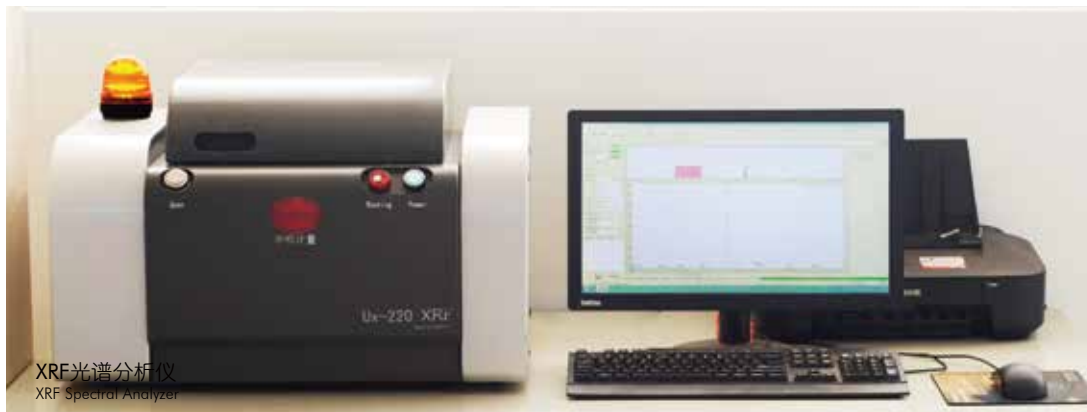
中性盐雾试验箱
Neutral Salt Spray Tester



图像尺寸测量仪
Image dimension measuring instrument



气密性检测仪
Air tightness tester



XRF光谱分析仪
XRF Spectral Analyzer

企业文化

Corporate Culture



倍仕得使命：为全球工业提供最可靠的连接器产品
Mission: To supply most reliable connectors for global industry.

客户价值观：敬畏客户；为客户创造独特价值的决心不动摇
Customer Value: Revere clients; Never waver in determination to create unique value for our clients.

品质价值观：品质如命，只有一次；做出100%合格产品的决心不动摇
Quality Value: Quality as life, only once. Never waver in determination to produce 100% qualified products.

A large, stylized image of the Earth from space, showing the Americas. Overlaid on the globe is a network of glowing blue and white lines and nodes, representing global connectivity and technology.

连接世界 · 连接未来

TPP

流体快速连接器

TPP Fluid Connector



安全环保 Safe & Environmental

- 双向平面密封，连接/断开无滴漏。
- 平面密封设计，既方便清洁，又避免介质受污染。
- 插头、插座均配有保护套，防止在运输中密封面受污染。
- 有断开卸压选型需求，请联系我司。
- Bi-directional flat sealed design that ensures no leakage during connection and disconnection.
- Flat seal design, which is easy to clean and avoids contamination of the medium.
- Plug and socket are equipped with protective caps to prevent the sealing surface from being polluted during transportation.
- Please contact us if you have requirement for pressure relief after disconnection.

稳定可靠 Stable & Reliable

- 钢珠锁紧&内部长导向结构，适用更大的机械应力环境。
- 有多种密封材质O型圈可选，适应不同介质温度需求，保证密封效果长期稳定可靠。
- 插头插座连接处O型圈的径向设计，保证在连接时，阀门打开前已完成密封。
- Steel ball locking and internal long guiding structure is suitable for greater mechanical stress environment.
- Various sealing material O-rings are available to meet the temperature requirements of different media and guarantee long-term stable & and reliable sealing performance.
- The radial design of the O-ring at the connection of the Plug and Socket ensures that the sealing function has been completed before the valve is opened during connection.

方便快捷 Convenient

- 钢珠锁紧半自动连接，推入即可锁紧连接并密封，操作轻松，方便快捷。
- 多种颜色选择，快速辨别不同回路。
- G外螺纹默认带密封圈，使安装更方便，密封更轻松。
- 凸肩和滚花的长锁紧环更容易抓握和断开。
- Steel ball locking semi-automatic connection, push-in to lock the connection and seal, easy to operate, convenient and quick.
- Multiple color options for quick identification of different circuits.
- G external thread with O-ring makes installation more convenient and sealing easier.
- Long locking rings with convex shoulder and knurls for easier gripping and disconnecting.

个性化定制 Customized

- 可定制接头尾端匹配接口，方便安装。
- 定制软管集成，美观，降低泄漏风险。
- 其他定制要求请咨询我司。
- Providing customized end-fitting for easy installation.
- Providing customized hose integration with aesthetic appearance and reducing risk of leakage.
- For other customization requirements, please contact us freely.

TPP

流体快速连接器

TPP Fluid Connector



应用领域 Application Fields

- 航空航天、军工防务等领域 Aerospace, military defense and other fields
- 医疗设备 Medical equipment
- 数据中心、超级计算机 Data center, Supercomputer
- 核能、风电、光伏（储能、变流器）等新能源领域
Nuclear energy, wind power, photovoltaic(energy storage, converters) and other new energy fields
- 轨道交通、新能源汽车 Rail transit, New energy vehicles
- 工业 Industry

流体 Fluids

- 冷却液 Coolant
- 去离子水 Deionized water
- 水-乙二醇 Glycol Water
- 导热油 Heat transfer oils
- 酯类 Esters
- 煤油 Kerosene
- PAO

基础型号

补充选项, 后缀信息

TPP 05S G14F - SS - NB - 90 - RD

颜色 Colour

RD 红色	GN 绿色
YW 黄色	BK 黑色
BU 蓝色	

角度 Angle

00 直通 (默认, 型号不体现)
90 90度弯头
45 135度弯头

密封圈 Sealing

EP 乙烯橡胶EPDM (默认, 型号不体现)	FF 高氟橡胶FFKM
NB 丁腈橡胶NBR	CR 氯丁橡胶CR
FM 氟碳橡胶FPM/FKM/Viton	
FV 氟硅橡胶FVMQ	

材料 Material

AL 铝合金 (默认, 型号不体现)
SS 不锈钢316L
BR 铜
SA 不锈钢304

内外螺纹 Internal and external threads

F 内螺纹
M 外螺纹

G/R/N/J螺纹尺寸 Size

18 1/8	32 1-1/2吋
14 1/4	01 1吋
38 3/8	02 2吋
12 1/2	04 4吋
34 3/4	

M螺纹尺寸 Size

08 M8螺纹
12 M12螺纹
21 M21螺纹

H08 接08内径的橡胶软管
S10 接10mm外径的不锈钢管
B810 接8x10的铜管
T812 接8x12的塑料管
F3636 法兰孔36x36

连接方式 Connection method

G G螺纹	H 软管Hose
R R螺纹	S 不锈钢管 SS
N NPT螺纹	B 铜管 Brass
J UNF螺纹JIC37°锥 ISO8434	T 扣压塑料管TUBE
M M螺纹	F 法兰Flange

插头插座 Plug socket

S 插座
P 插头

等效通径 Equivalent diameter

03 □径3mm	09 □径9mm	20 □径20mm
05 □径5mm	10 □径10mm	25 □径25mm
06 □径6mm	12 □径12mm	50 □径50mm
08 □径8mm	16 □径16mm	00 □径100mm

类目名称 Category name

B 自动连接平面密封	BBT 卡口
S 不含锁紧系统	BTG 三曲槽
T 其他	BSL 钢珠自锁
	SCB 盲插
	SDB 位移盲插
	TPP 推拉平面密封
	TSF 螺纹锁紧连接
	TPB 按钮金属接头

材质 Material	编码 Code	工作温度 Working temperature	应用 Application
丁腈橡胶 NBR	NB	-15 ~ + 100°C	1、一般应用 2、良好的机械强度 1. General applications. 2. High mechanical strength.
氟碳橡胶 FPM、FKM、Viton	FM	-10 ~ + 200°C	1、良好的耐化学性 2、优异的耐高温性能，可用于最高200°C的应用 3、适用于矿物油、合成液压油、燃料、化工产品、碳氢化合物和导热流体回路 1. Good chemical resistance. 2. Outstanding resistance to high temperatures up to 200°C. 3. Resistance to mineral oils, synthetic hydraulic oils, fuels, chemicals, hydrocarbons and coolants.
乙丙橡胶 EPDM	EP	-20 ~ + 150°C	1、优异的耐高温性 2、适用于磷酸盐酯型制动液，冷、热水，蒸汽 3、注意介质回路各部件不能使用含矿物油的情况 1. Excellent resistance to high temperatures. 2. Compatible with phosphate-based brake fluids - esters, hot and cold water, steam. 3. Pay attention to the use of mineral oil in the components of the medium circuit
高氟橡胶 FFKM	FF	0 ~ + 250°C	1、兼具弹性体和聚四氟乙烯耐化学腐蚀性的特点 2、具有很好的耐热性和耐多数化学剂 3、适用于导热流体 1. Combines the qualities of an elastomer with the chemical resistance of PTFE. 2. Remarkable resistance to heat and most chemical agents including inorganic and organic acids. 3. Coolants.
氟硅橡胶 FVMQ	FV	-45 ~ + 175°C	1、最大工作压力：50 bar 2、良好的耐低温和耐高温性能 3、适用于矿物油、燃料 1. Max. working pressure: 50 bar. 2. Good resistance to low and high temperatures. 3. Resistance to mineral oils, fuels.
聚四氟乙烯 PTFE	PT	-50 ~ + 200°C	1、最大工作压力：80 bar 2、良好的耐化学性 3、优异的耐低温和耐高温性能 4、比弹性体的性能更优异 1. Max. working pressure: 80 bar. 2. Excellent chemical resistance. 3. Very good resistance to low and high temperatures. 4. Superior performance to elastomers.
氯丁橡胶 CR	CR	-40 ~ + 100°C	耐老化，特别适用于制冷液 Good resistance to ageing and refrigerants.

为了选择最能满足您应用需求的解决方案，建议向我们提供如下准确信息：

In order to choose the solution that best meets your application needs, it is recommended to provide us with the following accurate information:

- 1、流体类型 2、工作压力 3、工作温度 4、水溶液的盐和酸浓度 5、特别的使用条件
1. Fluid type 2. Work pressure 3. Working temperature 4. Salt and acid concentration of aqueous solution 5. Special usage conditions

若需咨询，请随时联系我们的技术专家。

我们经验丰富的快速连接器专家，为您提供最贴心的服务。

If you need any inquiries, please feel free to contact our technical experts.

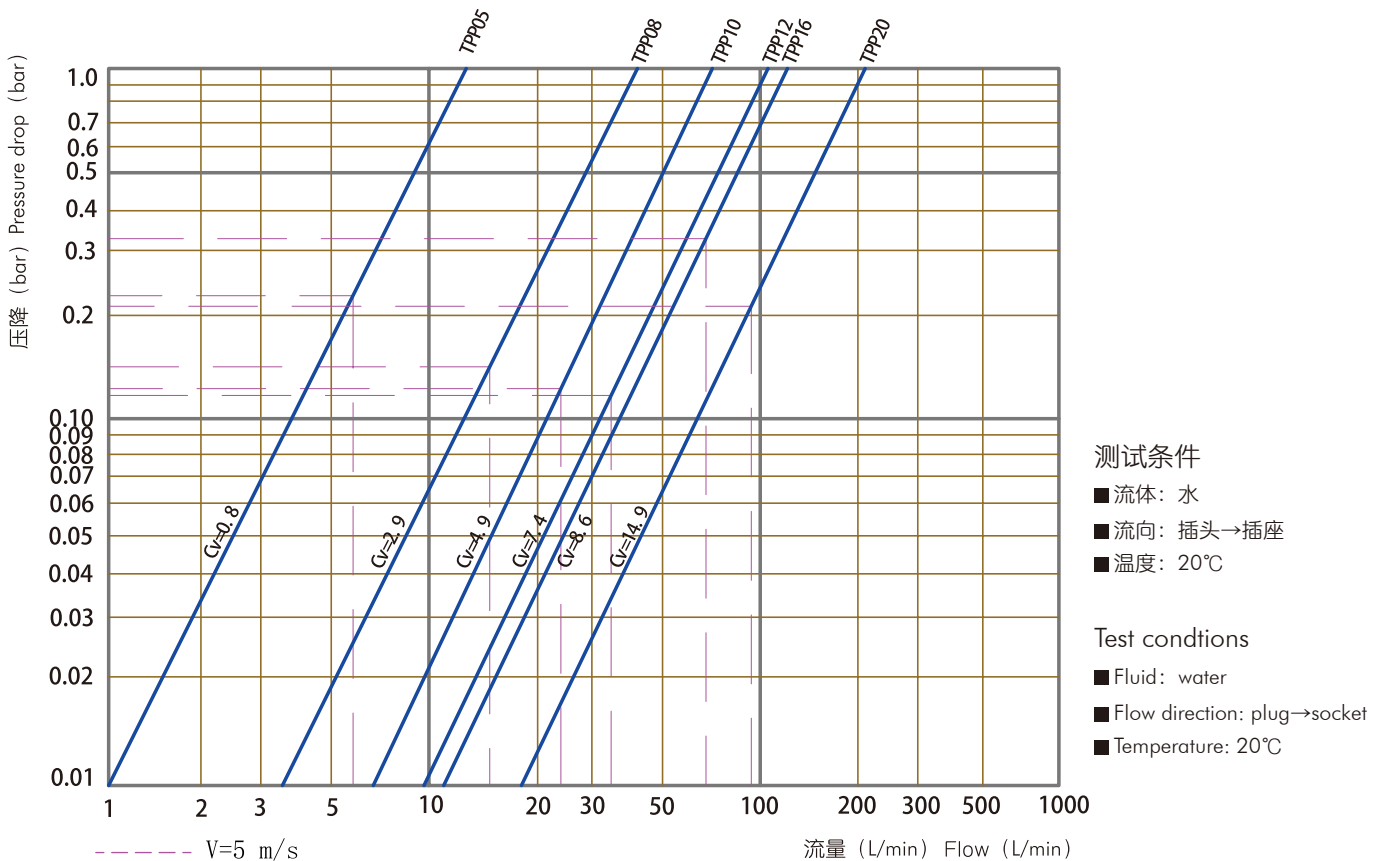
Our experienced quick connector experts provide you with the most thoughtful service.



普通型 Regular Type

产品型号 Product Model	TPP05	TPP08	TPP10	TPP12	TPP16	TPP20
额定工作压力 (bar) Working Pressure (bar)	40	20	20	20	20	20
Cv值 (Gal/min) CV (Gal/min)	0.8	2.9	4.9	7.4	8.6	14.9
额定工作流量 (L/Min) Working Flow (L/Min)	5.88	15.07	23.55	33.90	68.05	94.2
单次插拔最大泄露量 (ml) Leakage Per Disconnection (ml)	0.02	0.02	0.03	0.05	0.10	0.12

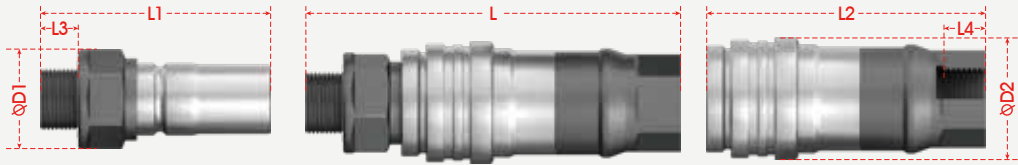
TPP流量曲线
TPP Flow Chart



→ TPP05

插头插座连接图
Plug and socket connection diagram

$L = L1 + L2 - X$
 $X = 21\text{mm}$



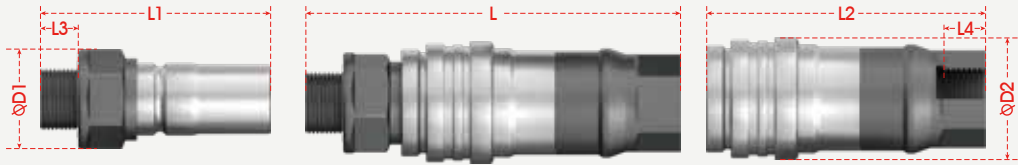
	Picture	End Fitting Type	L1	L2	L3	L4	D1	D2	Hex	Product model
插头		G1/4外螺纹	45	/	11	/	19	/	17	TPP 05P G14M
		G1/4内螺纹	49	/	12	/	19	/	17	TPP 05P G14F
插座		G1/4外螺纹	/	56.5	/	11	/	22	18	TPP 05S G14M
		G1/4内螺纹	/	55.5	/	12	/	22	17	TPP 05S G14F

若需咨询其他尾端连接方式，请随时联系我们的技术专家。
我们经验丰富的快速连接器专家，为您提供最贴心的服务。
If you need to inquire about other end fitting, please feel free to contact our technical experts.
Our experienced quick connector experts provide you with the most thoughtful service.

→ TPP08

插头插座连接图
Plug and socket connection diagram

$L = L1 + L2 - X$
 $X = 27.8\text{mm}$



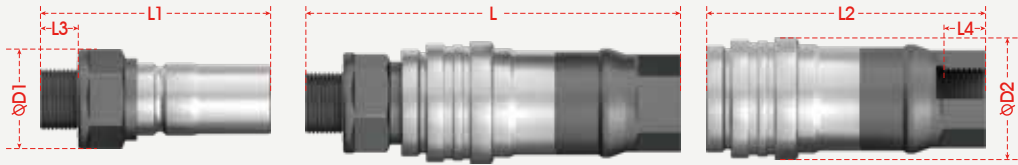
	Picture	End Fitting Type	L1	L2	L3	L4	D1	D2	Hex	Product model
插头		G3/8外螺纹	53.5	/	12	/	23.5	/	21	TPP 08P G38M
		G3/8内螺纹	57.5	/	13	/	23.5	/	21	TPP 08P G38F
插座		G3/8外螺纹	/	60.5	/	12	/	30	24	TPP 08S G38M
		G3/8内螺纹	/	64.5	/	13	/	30	24	TPP 08S G38F

若需咨询其他尾端连接方式，请随时联系我们的技术专家。
我们经验丰富的快速连接器专家，为您提供最贴心的服务。
If you need to inquire about other end fitting, please feel free to contact our technical experts.
Our experienced quick connector experts provide you with the most thoughtful service.

→ TPP10

插头插座连接图
Plug and socket connection diagram

$L = L1 + L2 - X$
 $X = 38.5\text{mm}$



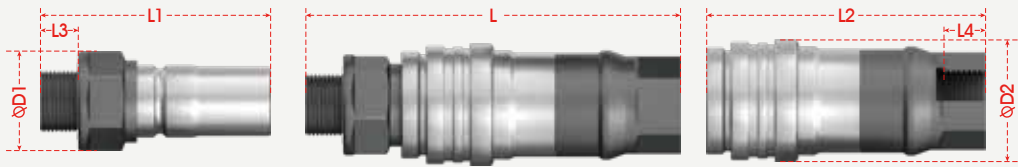
	Picture	End Fitting Type	L1	L2	L3	L4	D1	D2	Hex	Product model
插头		G1/2外螺纹	71	/	14	/	30	/	27	TPP 10P G12M
		G1/2内螺纹	76	/	15	/	30	/	27	TPP 10P G12F
插座		G1/2外螺纹	/	76	/	14	/	37.5	30	TPP 10S G12M
		G1/2内螺纹	/	81	/	15	/	37.5	30	TPP 10S G12F

若需咨询其他尾端连接方式，请随时联系我们的技术专家。
我们经验丰富的快速连接器专家，为您提供最贴心的服务。
If you need to inquire about other end fitting, please feel free to contact our technical experts.
Our experienced quick connector experts provide you with the most thoughtful service.

→ TPP12

插头插座连接图
Plug and socket connection diagram

$L = L1 + L2 - X$
 $X = 45.8\text{mm}$



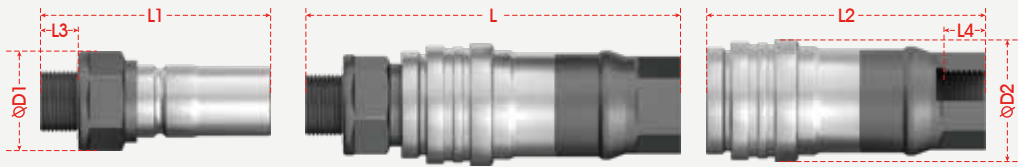
	Picture	End Fitting Type	L1	L2	L3	L4	D1	D2	Hex	Product model
插头		G1/2外螺纹	80	/	14	/	34	/	30	TPP 12P G12M
		G1/2内螺纹	85	/	15	/	34	/	30	TPP 12P G12F
插座		G1/2外螺纹	/	95	/	14	/	41.6	30	TPP 12S G12M
		G1/2内螺纹	/	100	/	15	/	41.6	30	TPP 12S G12F

若需咨询其他尾端连接方式，请随时联系我们的技术专家。
我们经验丰富的快速连接器专家，为您提供最贴心的服务。
If you need to inquire about other end fitting, please feel free to contact our technical experts.
Our experienced quick connector experts provide you with the most thoughtful service.

→ TPP16

插头插座连接图
Plug and socket connection diagram

$L = L1 + L2 - X$
 $X = 52.9\text{mm}$



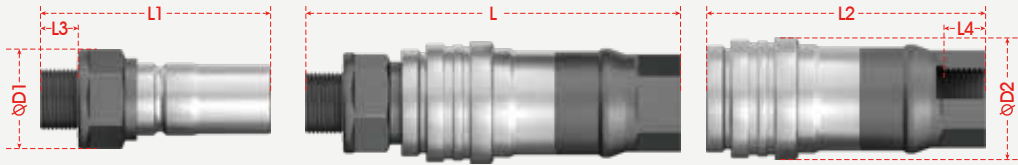
	Picture	End Fitting Type	L1	L2	L3	L4	D1	D2	Hex	Product model
插头		G3/4外螺纹	93.5	/	16	/	39	/	36	TPP 16P G34M
		G3/4内螺纹	97.5	/	17	/	39	/	36	TPP 16P G34F
插座		G3/4外螺纹	/	107	/	16	/	50	41	TPP 16S G34M
		G3/4内螺纹	/	119	/	17	/	50	41	TPP 16S G34F

若需咨询其他尾端连接方式，请随时联系我们的技术专家。
我们经验丰富的快速连接器专家，为您提供最贴心的服务。
If you need to inquire about other end fitting, please feel free to contact our technical experts.
Our experienced quick connector experts provide you with the most thoughtful service.

→ TPP20

插头插座连接图
Plug and socket connection diagram

$L = L1 + L2 - X$
 $X = 55.4\text{mm}$



	Picture	End Fitting Type	L1	L2	L3	L4	D1	D2	Hex	Product model
插头		G1外螺纹	112.5	/	20	/	50.5	/	46	TPP 20P G01M
		G1内螺纹	118	/	21	/	50.5	/	46	TPP 20P G01F
插座		G1外螺纹	/	125.5	/	20	/	59.5	50	TPP 20S G01M
		G1内螺纹	/	141	/	21	/	59.5	50	TPP 20S G01F

若需咨询其他尾端连接方式，请随时联系我们的技术专家。
我们经验丰富的快速连接器专家，为您提供最贴心的服务。
If you need to inquire about other end fitting, please feel free to contact our technical experts.
Our experienced quick connector experts provide you with the most thoughtful service.

倍仕得电气科技(杭州)股份有限公司
BEISIT ELECTRIC TECH (HANGZHOU) CO.,LTD.

浙江省杭州市临平经济开发区唐梅路1号 邮编: 311100

Add.: 1, Tangmei Rd., Linping Economic Development Area, Hangzhou, Zhejiang 311100, China

Tel: 0086-571-8936 2888 E-mail: info@beisit.com

Http: // www.beisit.com

倍仕得电气科技(深圳)有限公司
BEISIT ELECTRIC TECH (SHENZHEN) CO.,LTD.

深圳龙华区壹成环智中心B座1203-1204单元 邮编: 518109

Add.: Unit 1203-1204, Building B, Yicheng Huanzhi Center, Longhua District, Shenzhen 518109 China

Tel: 0086-755-23730413 E-mail: info@beisit.com

Http: // www.beisit.com

倍仕得电气科技(杭州)股份有限公司天津分公司
BEISIT ELECTRIC TECH (HANGZHOU) CO.,LTD. - TIANJIN BRANCH

天津河东津滨大道万达广场写字楼A座1416 邮编: 300171

Add.: #1416 Building A, Wanda Plaza Office Building, Jinbin Avenue, Hedong District, Tianjin 300171 China

Tel: 0086-22-85453260 E-mail: info@beisit.com

Http: // www.beisit.com



微信公众号



官网



抖音

⚠ We reserve the right to make technical changes or modify the contents of this document without prior notice. All the agreed particulars shall prevail. All rights reserved.